



The PAGE

Page High Forever

Spring/Summer 2009



FROM THE PRESIDENT...

Our Page Alumni and Friends Association, in our first three years, has given twelve student scholarships and five teacher scholarships; renovated the Auditorium Lobby; worked on reviving the Alma Pinnix Bank; been responsible for about 60% of the funds for the visitor concessions/bathroom building; and sent newsletters biannually. We have put \$75,000+ directly into the school and helped make other things happen.

We have about 7000 on our mailing list but have received memberships from only about 725 of you over the course of three years. In order for our Association to survive and grow, WE NEED YOU! We need your membership AND we need your attendance at our meetings.

Ours is one of the few high school alumni associations in the state of North Carolina. We are so encouraged by each membership we receive, especially from those who live out of the area or out of the state. We also realize there are thousands of Page graduates that live in Guilford County, many of whom have children that are Page students, future Page students, or Page alumni themselves, that we haven't heard from.

Of course, we'd love to receive a huge membership donation from each one of you. But we do understand these difficult economic times. Join at whatever level you can. If you live in town, come to our meetings. They are structured to last for one hour only, with the option of staying around after that hour so that we might answer any questions you may have. Anyone wishing to have something discussed at the meeting can contact me to get on the agenda.

Presently, ten classes are working on class reunions. We have helped get some of these going and have been able to supply a bit of contact information to some of them. As the membership in our Association grows, we can be more instrumental in helping class organizers with contact information, but only if you send it to us.

Help us continue into the future. Without you, we cannot. Join our Association. Come to the meetings. Bring your friends and your ideas. Be a part of something that is doing something good for the young people of our community. Support your child(ren)'s school. Support your alma mater! Support your child(ren)'s alma mater! Every dime is **TAX-DEDUCTIBLE!**

You can mail it in or join online at www.pagealumniandfriends.org.

Susan Tysinger, President
sgtysinger@triad.rr.com

PAGE ALUMNI AND FRIENDS ASSOCIATION LEADERSHIP

Officers

Susan Tysinger President
Charles Wright..... V. President/Treas.
Susan Veazey Secretary
Marilyn Foley..... Principal

Board of Directors

ABC Liaisons..... Suzanne Seeger
..... Chuck Seeger
Alma Pinnix Bank Karl Anderson
Website/Class Agents Brad Earle
..... Tammy Johnson
Golf Johnny Hodges
Newsletter Susan Tysinger
..... Cathy Ingram
Scholarships..... Stephanie Keaney
At Large John Graham
..... Sarah Himmelrich
..... Toni Jones
..... Buddy Rankin
..... Charlie Roer
..... Karen Roer
..... Terry Worrell

INSIDE...

<i>From the Principal.....</i>	<i>2</i>
<i>Student Scholarship Recipients.....</i>	<i>6</i>
<i>Teacher Scholarship Recipient.....</i>	<i>7</i>
<i>Athletic Excellence.....</i>	<i>9</i>
<i>Class reunions.....</i>	<i>11</i>
<i>Page-Grimsley Golf Tournament.....</i>	<i>10</i>
<i>In Honor/Memory of.....</i>	<i>13</i>
<i>2008-9 A&F Contributors.....</i>	<i>12</i>
<i>2007-8 A&F Contributors.....</i>	<i>14</i>
<i>It Happened at Page.....</i>	<i>15</i>
<i>A&F Membership Form.....</i>	<i>16</i>

Mondays
5:30 PM
Page Media Center

ALUMNI AND FRIENDS ASSOCIATION MEETINGS

September 14, 2009
May 3, 2010

November 2, 2009
January 11, 2010

March 1, 2010

Fourth Annual Meeting: Time and location TBA

Always check www.pagealumniandfriends.org in case the time or venue of any meeting has been changed.

FROM THE PRINCIPAL

Summer is a time to reflect on the accomplishments of our students throughout the year. This year was one where both strength and perseverance were needed. This spring we lost two wonderful members of the Page family, an honor student, Sarah Wray, and a teacher, Jeremiah Wills. Both were involved in separate vehicle accidents. There was no one in our school community who was not touched by these two tragedies.

We work to help our students maintain excellence in scholarship, the arts, athletics, and citizenship. Some notable Page accomplishments this year include:

- \$7.7 million in scholarship money, the highest amount ever earned in the history of Page
- Acceptance to 102 universities and colleges by our senior class
- Sixty-one AP scholars (scores of three or higher on three AP exams); eight National AP Scholars
- Improvements to the campus
 - A new visitor concession stand adjacent to athletic fields
 - Additional fencing and improvements to the existing fields
 - 'G' wing Auditorium Lobby updated with a large screen TV, student seating areas, tiling, and murals by AP art students
 - New auditorium carpeting scheduled for installation this summer
- Four All-State Orchestra students
- Two Governor's School participants
- Six National Merit Commended students
- Five state winners at the Technology Student

Association competition who will compete at the national competition in Colorado this summer

- The reinstatement of Junior Marshals
- The addition of two new programs (Medical and Electrical) to our Career Tech track, and a third (Drafting) to be added in the upcoming year
- Increased emphasis on Math and Science
- Strong gains in end-of-course test scores in biology, chemistry, physics, physical science, and geometry
- Guilford County Schools *Rookie Teacher of the Year*—Matthew Rickard
- Guilford County PTSA *Teacher of the Year*—Teresa McNeill
- Student award winner at the YWCA Girls and Women In Sports
- Increased student participation and fund-raising in community service organizations

While we offer these commendations as validity of the excellence that has always been associated with Page, much work continues to lie ahead of us. We anticipate that with the current budget crisis and overall economy, we will face a difficult year. With your continued support Page will continue to thrive as one of the flagship schools in our city.

We are grateful for the part the Alumni and Friends Association plays in the life of our school. Improvements made possible by this Association are visible from one end of the campus to the other. Scholarships have helped students and teachers further their education.

We invite you all to a play, a concert, a ballgame, or just a visit!

Marilyn Foley, Principal

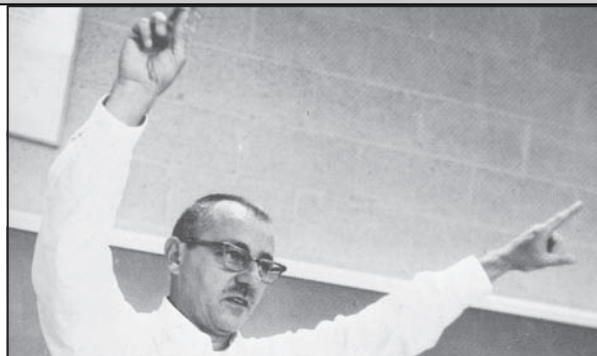
HAIL TO THE BUCCANEERS!



Mr. Ellis in 1966

The Page family says good-bye to two wonderful musicians that taught at Page in the sixties: Harry Shipman, band director, and Bob Ellis, choral director. Mr. Shipman died July 13 and Mr. Ellis died April 11.

Mr. Shipman was a Grimsley graduate, but it was our good fortune when he found his way to Page. His students loved him and his style of teaching. His legacy that we all know and share still today is the spirited fight song he wrote for Page, "Hail to the Buccaneers." It has been played and sung thousands of times by thousands of students for over 45 years.



Mr. Shipman in 1966

Mr. Ellis helped put Page's choral department on the map when his chorus was asked to perform at the 1967 Montreal World's Fair. Mr. Ellis taught public school music in North Carolina, Georgia, and Kentucky for a span of fifty years, and he served as president of Music Educators Associations in both North Carolina and Kentucky.

Thank you, Mr. Shipman and Mr. Ellis, for sharing your joy of music with all those around you throughout your lives!

FROM PAGE TO THE PROS...TENNIS PLAYER, JOHN ISNER



John Isner, a 2003 Page graduate, helped carry Page to two state men's tennis championships. He started his pro career in 2007 and now lives in Florida. This is a look into his world.

In your time at Page, who may have been most instrumental in your progress as a

player?

I think the private lessons I took from Oscar Blacutt and Tom Herb (whose wife was our Page head coach) were very instrumental in my progress as a player.

Did you play other sports growing up and how did you gravitate toward tennis?

I played basketball growing up and was pretty good at it. I eventually had to choose one sport because it became too difficult to balance both tennis and basketball. I chose tennis because I thought that would give me a better opportunity to get a college scholarship. Had I known I was gonna grow six inches my senior year in high school, I might have stuck with basketball!

How did you choose Georgia? Did you consider other schools?

Choosing Georgia was easy. Traditionally, UGA has one of the best programs in the country and it was only about a four-hour drive from Greensboro. I thought I could go there and become part of something special, and I did. Going 32-0, we won a national championship my senior year, and I became the all-time winningest singles and doubles player in UGA's history. I definitely made the right choice!

Are you a better player in singles or doubles?

I feel that right now I am a better singles player. My first two years in college I was a better doubles player, but after that I saw my singles game really start to improve. So now I concentrate more on singles play.

Yet you won an important doubles title at the Hall of Fame tournament in Newport.

Playing at the tennis Hall of Fame was so neat, and it was obviously a thrill to win the doubles at that event. That place has so much history its amazing. I look forward to playing that tournament a lot during my career.

Your unusual height is obviously a key ingredient in your play. How does it help you and possibly hinder you as a player?

Being as tall as I am helps me mostly with my serve. I am able to create angles that most guys cannot. I am not the fastest guy on the court, as that is something that my

height does not help with. I work tirelessly at improving that aspect of my game so it does not show up as a glaring weakness in my game. I feel that I move very well for a guy my size, though.

While you've had a fine start as a player, you seem to be inconsistent at times. How do you feel about your overall progress as a professional to date?

I had a great start and can attribute that to my time in college. I won so many matches while at UGA, then went out on the pro tour and won a lot, probably because I simply did not know any better. I was just so happy to be in the situation I was in. After that I knew it was gonna be a tough process.

Although I would not change anything about that first summer, I definitely did struggle a bit after that. I probably got ahead of my learning curve, being in a most unusual top 100 position after just six months of professional play. It usually takes guys two or more years to get there, and most players never even reach the top 100.

Since March, I feel like I've really found my game. I got back into the top 100 and have won a lot of matches, playing with tons of confidence right now. Acquiring Mono was an unfortunate setback, but I'm getting back into shape and look to continue the good form I had before.

You obviously rely on a tremendous serve. Is there anything major you'd like to change about your game?

Since I do have a strong serve, I work more on other aspects of my game. I really would not change much about my game, but I would like a better backhand and know it will continue to improve.

We understand that illness kept you from participating in the French Open. Have you fully recovered?

Unfortunately, I came down with Mono, which kept me from competing in the French Open and Wimbledon. I have fully recovered and will be back 100% for the summer hard court tournaments in the US. I don't get to be in Greensboro much, but I did spend part of June in Greensboro, visiting with family and friends while convalescing.

Playing world-class tennis appears to be a glamorous life. What has been the most interesting part of it and what has been its major downside.

The travel is both the glamorous side of it and the major downside of it. I have competed pretty much all over the world which is extremely exciting, but it can be very tiresome. Traveling from time zone to time zone is tough.

Do you have your own family yet, and what are your thoughts about continuing as a professional player?

No family now, and don't plan on that for a while! I am going to continue playing professional tennis for as long as my body will allow me. I hope to play for ten more years, and I definitely think that is possible.

Special to The PAGE

Since this writing, John has qualified for the U.S. Open.

FORMER PAGE COACH ENTERS NCHSAA HALL OF FAME

Longtime Page High School basketball coach Mac Morris entered the North Carolina High School Athletic Association Hall of Fame on April 25, 2009, during induction ceremonies at the George Watts Hill Alumni Center in Chapel Hill.

Morris thus joins legendary Page football coach Marion Kirby in the NCHSAA's Hall. Kirby, who won 219 games and four state 4-A titles in 23 years at Page, was inducted into the high school Hall of Fame in 2000.

A graduate of Roxboro High School and Davidson College, Morris served at Page from 1968 through 1994, including 25 years at the helm of the basketball program. His Pirate teams, thriving on Morris' emphasis on the game's fundamentals, went 446-141 during his tenure.

His career included state 4-A titles in 1979, 1983, and 1990, the latter two teams going undefeated. He also served as head boys' tennis coach at Page and won a state title in 1971.

In addition to his work at Page, Morris has served on the staff of the North Carolina Coaches Association since 1977 and has been instrumental in that group's annual clinic sessions. He is a member of the N.C. Athletic Directors Association Hall of Fame and the Guilford County Sports Hall of Fame.

Shortly after his induction in Chapel Hill, Morris said, "Honors like this should remind us of all the people who helped us along the way, especially our own families. I have also been very fortunate to have the support of great people in the coaching profession, fine Page families, and excellent young athletes."

The induction of Morris into the NCHSAA Hall continues a pattern of tribute to Morris and Kirby, two coaches whose personal accomplishments and contributions to Page High School have elevated both to special status. On September 7, 1997, the football stadium and gymnasium at Page were named after Kirby and Morris, respectively.

On that occasion, both Kirby and Morris were praised in the U.S. Congressional Record, no doubt courtesy of U.S. Rep. Howard Coble. The entry said of Morris, "Coach Morris won three state basketball championships over three decades with Page High School, but more important than these victories is Mr. Morris' genuine concern for his students and players."

The entry continued, "Mac could always be counted on to push his athletes to work just a little bit harder, and to urge his students to set their goals just a little bit higher."



Que Tucker, Deputy Executive Director, Mac Morris, and Bill Harrison, NCHSAA President at that time.

Morris' former players will confirm that he would not compromise on his commitment to the game's basic principles. He emphasized defense, taking good shots, and unselfish play, making no bones about his belief in the Dean Smith brand of basketball.

Morris was an emotional coach, having little patience with sloppy officiating and no patience with indifferent play on the part of Page Pirates. At the same time, he had a capacity to adjust his coaching style to maximize the motivation of his teams.

Ironically, it was likely his decision to ratchet down his own pressure on a team that led to one of his most magical seasons. His 1990 Page team went 31-0, culminating in a 46-43 win over Wilson Fike in front of an estimated 14,000 fans in the Smith Center in Chapel Hill.

There were several letters sent to the NCHSSA office last year supporting Morris' induction into the high school Hall of Fame. One included this excerpt, praising the coach's ability to understand a team's chemistry and adjust to it.

The fundamental reason that the 1990 Page team was able to achieve their improbable greatness was Mac Morris' ability to switch horses in midstream, his willingness to rely on the heart and intellect of his players at every turn.

Mac learned to trust this team and invest in their dignity. Mac Morris was gentle with this team, and they rewarded him for it. The amazing thing about all of this was Coach Morris rode this learning curve very late in his career and just in time to give a dozen kids the time of their lives.

Morris entered the NCHSSA Hall of Fame with seven other inductees, including Charlie Adams, a NCHSSA staff member since 1967 and NCHSAA Executive Director since 1984. More than 250 people jammed the main banquet hall of UNC's Alumni Center for the festivities, including a large group of former Page players, their parents, and other supporters.

Staff Report

We gladly accept gifts of stock or matching funds!

THE 1979 TEAM CELEBRATING AFTER WINNING THE STATE CHAMPIONSHIP



THE 1983 STATE CHAMPIONSHIP TEAM



THE 1990 STATE CHAMPIONSHIP TEAM



WHAT SPORT'S RETURNING TO PAGE?

Field hockey is returning to the sports lineup at Page. For those of you who don't remember (and that's probably most of you!), Page had a field hockey team in the sixties. Northwest is the only other school in the county with a field hockey team at this time, as they added it last fall.

A monetary grant has been received from Penn-Monto Field Hockey Foundation to help offset startup expenses. Alicia Picou, former UNC field hockey player who will coach the team says, "I'm very excited and thankful for the opportunity to build a new field hockey program at Page High School and spread the field hockey bug to the Triad. I hope to establish a team that strives to push one another to excel, building a foundation for future years."

DATES TO REMEMBER

September 4	First Home Football game
	New Visitor Stand dedication
September 18	Homecoming
September 26	Hunter Byers Alumni Soccer Match
October 9	Page-Grimsley Golf Tournament
October 9	Page-Grimsley Football Game
November 6	Fall Sports Senior Night

ATHLETIC BOOSTER CLUB CORPORATE SPONSORSHIP

How would you like to see your company's name on a banner around Marion Kirby Stadium, or see your name on a scroll ad in Morris Gym?! What a great way to advertise to the thousands of people who come to Page High School's sporting events! You can do so by becoming a corporate sponsor.

The funds help provide a wide range of activities, equipment, and facility improvements. There are three levels of sponsorship available, ranging from \$500-\$1500.

If you are interested in supporting Page High School through the Athletic Booster Club's Corporate Sponsorship Program, please contact Corporate Sponsor Co-Chairs Liz and Joel Mills, at 336-378-0864, lizmills617@aol.com or joel.mills@advhomecare.org for more information!

To become an Athletic Booster Club member or buy money-saving season tickets, contact Melanie Albright at malbright@triad.rr.com.

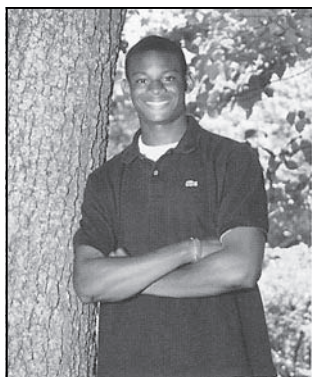
STUDENT SCHOLARSHIP RECIPIENTS

The Page High School Alumni and Friends Scholarship Committee had a banner year! We had more applicants for our scholarships than in our previous years, and we offered more money than in the past. Our four awards this year were \$850 each, with \$750 going directly to the winners' schools and a \$100 Visa gift card going directly to the winners.

Paul Wingate ('88), Jeff Queen ('88), and I comprised the Scholarship Committee. After reading many applications, then interviewing many outstanding candidates, we selected the 2009 Page Alumni and Friends Scholarship recipients. Although they all had very different roles and experiences at Page High School, they all stood out among their peers as true Page Pirates. It is with great excitement and pride that we share those four winners with you.

Matthew Biggers is an impressive young man. He is

hoping to study Biomedical Engineering at the University of North Carolina at Chapel Hill beginning this fall. At Page, Matthew was actively involved in many organizations and sports. Most recently, he was the Captain of the Men's Varsity Soccer Team. Matthew is also active in the Juvenile Diabetes Research Foundation, even lobbying a U. S. Congressman for support. Matthew understands the importance of community and school culture. In his own words,



Page has taught me that in order to become more unified in our school community and in our country, we should all accept all types of people and eliminate any biases or prejudices we may have. We can apply the same things done in high school to the whole country. We need to remember that what defines a person is not his race or income, but his integrity and character.

Mawa Conneh came to Page High School four years ago when her family moved to Greensboro from Liberia. For the two years prior to coming to the United States, Mawa lived in a refugee camp with her uncle and his family. She has overcome many barriers, learning a new language as well as a new culture. She is hoping to become a nurse and plans to begin her studies at Guilford Technical Community College this fall. Although her life story is very different from most students', she stands with her fellow Pirates in wanting to recognize and thank the hardworking teachers at Page High School.



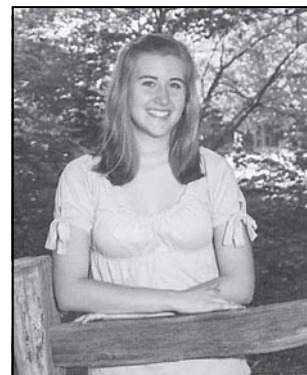
When we came here, Lutheran Family Services sponsored us. They took care of us and helped us get a good start. They enrolled me in Page High School where the teachers have improved my life. They taught me to read, write, and speak in English. I would like to thank all the teachers who taught me to become a better student. They have helped me to become prepared for my life after high school.

Taylor Greene is an active volunteer, both at Page High School and in the community at large. She was on the Varsity Volleyball team for all four of her years at Page. She is heading to Clemson University in the fall, and will have to make the adjustment to wearing orange and purple! As Taylor stated in her essay,



It seems that every article of clothing I now own is red, white, and black. For the last four years, I have been proud to say that I am a Page Pirate. Whether it is the amazing school spirit at the athletic events, the great relationships with my classmates, or anything in between, Page High School has made me proud of who I am today.

Also heading to Clemson in the fall is this year's Senior Class President, **Kathleen Lahey**. Kathleen tried her hand at many different activities while at Page – lacrosse (team captain), Page Playmakers (theater department), the Creative Writing Club, and Young Life, just to name a few. Kathleen's essay talked about the life lessons that Page has taught her.



As I have loved being a Page Pirate, I look forward to being a part of the Page Alumni so I can support Page as it has supported me. Long after I have fought my way through A-C intersection for the last time, I will remember my wonderful days at Page. Although I am repeatedly told that I am moving on to "bigger and better things," I doubt any person or experience can ever replace a friend I have met at Page or a memory the school has given me.

Matt, Mawa, Taylor, and Kathleen will join their fellow classmates in beginning a new chapter this fall. Although they will take different paths, all will forever be Page Pirates! Thank you for helping to make their dreams of college become a reality through your generosity.

Stephanie Dingman Keaney ('93)

THANKS FROM TEACHER SCHOLARSHIP WINNER, BOB SMITH

Originally from Kannapolis, N.C., I have lived in the Triad for the last 15 years. I hold a bachelor's degree from Pfeiffer College and a master's degree from Georgia State University. I live in the High Point area with my wonderful wife Susan, who is a special education teacher with Thomasville City Schools. I'm completing my sixth year as a teacher with Guilford County Schools and my second year as a Page Pirate. Working with such an experienced team of teachers and administrators and such great students is worth the 45-minute commute to teach at Page!



I currently serve as a social studies teacher and AP/IB Coordinator at Page. I spend half my day in the classroom where I teach AP World History and an IB course called *Theory of Knowledge*. The other half is spent managing our AP and IB programs. I deal with everything from budget to recruitment, but a lot of my time is spent with parents and students. That's the part I enjoy the most.

My greatest challenge is balancing the AP and IB programs. They aren't mutually exclusive, and the programs do generally appeal to the same set of students. It's my job to understand what each has to offer, explain that clearly to parents and students, and help them make the best decision for themselves. That's where this summer's training will help me. I had IB training last summer in New Mexico. This summer's training will give me a better overview of the entire Advanced Placement Program. In turn, I will be better equipped to guide our students in the AP and IB courses of study.

I greatly appreciate the support that the Page Alumni and Friends Association has given me. Due to the state budget situation, I would not have been able to attend this conference if it weren't for your generosity. I believe I will be more able to serve the needs of our AP and IB programs after having had this training. I'll look forward to giving a report once I return.

Bob Smith

Bob Smith, teacher and AP/IB coordinator, received scholarship tuition from our Association for the Advanced Placement National Conference in San Antonio, July 15-20.

Come spectators! Come players! The PHS Hunter Byers Alumni Soccer Match is scheduled for Saturday, September 26. Time of day is still TBD, but anticipated to be late afternoon/early evening. Call or email Colleen Long at 336-317-6155 and/or colleen.long@allentate.com for more details or Jimmy Reittinger at jimmyr@automotivefasteners.com to sign up to play.

A challenge: Past soccer players, come see if you still "have what it takes"! Info will be posted on our website at www.pagealumniandfriends.org.

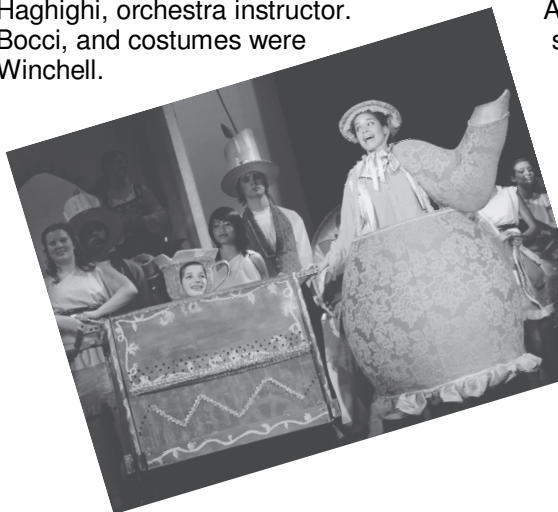
BEAUTY AND THE BEAST—A GRAND PRODUCTION!

Page Playmakers reached new heights this year with their production of Disney's *Beauty and the Beast*. With over 120 students in the cast, crew, and full orchestra, the show was an amazing success that will provide memories for all involved for many years to come. The musical was co-directed by drama teacher Michael Parrish and parent John Phillips. The music was supervised and conducted by Eddie Deaton, band instructor; Donna Brotherton, choral instructor; and Kamine Haghighi, orchestra instructor.

Bocci, and costumes were Winchell.

Amazing sets and special effects were created by Spanish teacher Melissa

Michael Parrish



TERESA MCNEIL—ONE OF PAGE'S FINEST

The words of Emma Lazarus' poem inscribed on the Statue of Liberty could be the mission statement for one of Guilford County's most dedicated teachers:

*Give me your tired, your poor,
Your huddled masses yearning to breathe free,
The wretched refuse of your teeming shore,
Send these, the homeless, tempest-tossed to me,
I lift my lamp beside the golden door!*

In fact, when Teresa McNeill first meets her students, most would describe those children as helpless and hopeless. Within a short period, that description is all but a faint memory, as they are not only learning, but they are also empowered to look after themselves and their families. Ms. McNeill's students consist of entirely non-English-speaking young people who hail from the horn of Africa to the jungles of Central America.

While most would see language as the most difficult barrier to overcome, Teresa McNeill sees it differently. She realizes that mathematics is a back door into any language barrier or cultural divide, and she uses math to give the students an "early victory" on their journey of learning. After all, math is a universal language! She then builds upon that by visiting every single one of her students in their home environment.

When the families of these students see someone is genuinely interested in them, and understands their frailties in a new country, they embrace her as any of us embraces our closest friends. Her belief in partnership with family and child has translated into academic success beyond the imagination.

In today's "edu-speak," Ms. McNeill would be hailed as utilizing a "holistic" approach to teaching. On any given

day, Teresa McNeill can be found taking new immigrant families to clothes closets and working to insure healthy living conditions for them in their new country. She knows that for learning to take place, all the pieces of the puzzle must be there. While she is not a social worker, Ms. McNeill realizes that in order for these young people to succeed tomorrow, she must begin to help them succeed today. In a world that lives and dies by standardized testing, Teresa McNeill gives her students the tools to not only function but to function at higher levels than many

natural born citizens! And guess what? Her students are testing unbelievably and are among the most ambitious academically in her school.

When first charged with helping high school immigrants accrue credits toward graduation, she sat down and wrote out a game plan to present to her Principal. Upon reading it, the Principal sent it up the chain of command and Teresa was

granted permission to operate a "School-within-a-School." She has her own staff of enthusiastic and dedicated teachers, and she has been granted the autonomy to create and administer her own coursework.

When asked about her students she says embarrassingly, "I feel like a rock star when I drive up to visit with my students and their families." Her humility is palpable and her dedication unequalled. Her students' successes correlate directly to the hard work she puts into teaching. Teresa McNeill represents everything that is right about the United States, and why so many people long for our shores.

John Graham

Page Teacher Teresa McNeill received the 2009 Guilford County PTSA Evon Dean Outstanding High School Educator Award.



"SUPERINTENDENT'S CHOICE" ART AWARD

Paige Carter, a rising junior, won the "Superintendent's Choice Art Award" this past year with her picture, "Jeweled Evening," chosen from among all the other entries in the county. Paige used a combination of professional art markers, colored pencils, oil pastels, acrylic paint, and gold-tinted furniture paint. The beauty of detail and color can be seen up close at the GCS Washington Street office where "Jeweled Evening" is on display. Art teacher Mary Ann Parah says it is quite impressive for a sophomore to win this prestigious award.

STUDENT ATHLETE EXCELLENCE ON THE FIELD

The **Men's Basketball Team** were Metro 4A regular season champions and conference tournament champions. They were the Midwest 4A sectional runner-up, finishing in the Sweet 16. Conference Players of the Year were **Julius Brooks, AJ Finney, Mitchell Oates,** and **Jordan Weethee.** **Robert Kent** was the Metro 4A Coach of the Year.

The **Women's Basketball Team** made it to the first round of the playoffs. Metro 4A All-Conference Players were **Ashley Fowler** and **Chevena Pickard.**

Making Metro 4A All-Conference from the **Women's Swim Team** were **Halle Beller** and **Chandler Leik.**

Making All-Conference from the **Men's Swim Team** was **Bruce Pittman.**

Making Metro 4A All-Conference from the **Wrestling Team** was **Joey Tastet.**

The **Women's Soccer Team** advanced to the playoffs. Making the Metro 4A All-Conference Team were **Ashley Adler, Grace D'Englere, Dominique Ledyard, Christin Newman, Claire Newman, and Mary Beth Sullivan.** **Ashley Adler** and **Christin Newman** were selected to play in the NC Coaches Association East-West All-star game in July. **Christin Newman** was named Metro 4A Player of the Year.

Anna Caudle was named to the **Women's Softball** Metro 4A All-conference Team.

Both **Men and Women's Track Teams** advanced to the playoffs. Making the Metro 4A All-Conference Track Team were **Will Bennett, Jazie Daniels, Will Foxx, Alexis Hall, Maggie Harahan, James Jenkins, Portia Oakley, Tonya Rascoe,** and **TJ Todd.** **Jazie Daniels** and **James Jenkins** were named Metro 4A Conference Track Meet MVPs. **Jazie Daniels** was the NCHSAA State Champion in the triple jump.

The **Men's Tennis Team** were the Metro 4A Conference Champions. Team members named to the Metro 4A All-Conference Team were **Austin Ansari, Harrison Holbrook, Landon Kinsey, Wade Thiel,** and **James Yates.** **Bruce Lanier** was named Metro 4A Coach of the Year.

The **Women's Lacrosse Team** advanced to the playoffs. Making the Metro 4A All-Conference Team were **Elizabeth Garvey, Ashley Elam, Lauren Gilman,** and **Sammy Morrison.** **Ashley Elam** was selected to play in the NCWLA East-West Lacrosse Game held in June.

The **Men's Lacrosse Team** advanced to the playoffs. Making the Metro 4A All-Conference Team were **Adam Hardy, Tyler Bagwell, Taylor Barker,** and **Casey Barber.**

Men's Baseball Team members **Zac Reffrey** and

Anthony Todino were named to the Metro 4A All-Conference Baseball Team.

Golf Team member **Billy Buchanan** was named to the Metro 4A All-Conference Golf Team.

STUDENT ATHLETE EXCELLENCE IN THE CLASSROOM

Page senior student-athletes earned \$2,006,000 in athletic scholarship money. Of the 21 Page varsity teams, 16 were recognized as NCHSAA Scholar-Athlete teams (3.1+ on an unweighted scale of 4.0):

Softball	Men's Cross Country
Baseball	Women's Soccer
Volleyball	Women's Lacrosse
Men's Tennis	Women's Basketball
Men's Golf	Women's Swimming
Men's Soccer	Women's Tennis
Men's Lacrosse	Women's Golf
Men's Swimming	Women's Cross Country

Taylor Barker was named as an Academic All-American.

AUDITORIUM LOBBY RENEWAL

Under the direction of parent Beverly Harrah, the Auditorium Lobby has a whole new look! With the help of the Guilford County Schools Maintenance Department, the walls have a more inviting color, one wall has beautiful deep gray tile accented with red tiles, and moldings have been added. With donations from the Page Alumni and Friends Association, the Class of 1978, the Class of 1998, and the Class of 2007, a flat screen TV and bench seating were added. GCS is planning to put new carpet in the auditorium in August.

ALMA PINNIX HILL

Thanks to contributions from the PTSA and our Alumni and Friends Association, the bank on Alma Pinnix Drive is looking better than it did this time a year ago. Lots of weeding has been done, rose bushes have been planted, and there are plans for more planting in the near future.

Alma Pinnix gave Page such a beautiful gateway to Page, and those of us who remember seeing her several days a week, planting or weeding on that hill, know that there's probably not another Alma Pinnix in our midst! But, thanks to Karl Anderson and a few other faithful, we are getting a handle on it. Please contact Karl at rogah82@yahoo.com if you are willing to give an hour or two of your time or have a "good deal" on supplies we might need!

We thank you for your patience and support as we beautify the Page bank and honor Mrs. Alma Pinnix!

FOURTH ANNUAL PAGE-GRIMSLEY GOLF TOURNAMENT



The fourth annual Page-Grimsley Golf Rivalry Reunion will be held Oct. 9 at Bryan Park—the same day as THE football game. The tournament has grown every year and, hopefully, we can do the same this year. Last year's tournament raised over \$28,000 and provided two scholarships per school for a male and female student-athlete. A big word of thanks goes to

tournament sponsor Greensboro Grasshoppers and scholarship sponsor Neese's Sausage. Everyone who works on or plays in the tournament has a fantastic time while contributing to both schools and their student-athletes.

To register, pay, sign up for sponsorship, or volunteer, go to www.pagegrimsleygolf.com.

- \$650 Gold sponsorship—four golfers, advertising on Welcome Banner, a link to web site, and tee or green signage
- \$125 Silver Sponsorship—tee or green signage
A challenge: Join Richard Beard, Charles Betts, Daniel Craft, Nathan Duggins, Grey McCaskill, Scott Rhodes, Dana & Dixon Smith, and Charles Wright and their respective companies as they support the tournament with \$125 hole sponsorships.
- \$85 Individual Play

Grimsley has had more golfers every year and, consequently, has won every year! These numbers seem to be relative, because the top 75 scores are calculated to see who holds The Cup for that particular year. So it's time for The Pirates to rally and put The Cup in its rightful place for 2009-2010. Go Pirates!!!



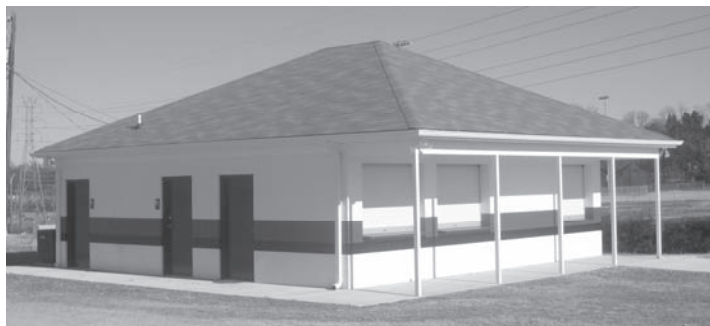
Scholarship plaque presentation (L-R: Dean Barrett, sponsor Tommy Neese, Principal Marilyn Foley, AD Rusty Lee, Johnny Hodges)



The Page Alumni and Friends Association and the Page-Grimsley Golf Committee express special thanks to Brad Earle ('71) for his invaluable technological assistance and website management.

NEW BUILDING TO BE DEDICATED

The Page Athletic Booster Club is planning to officially dedicate the Kirby Stadium's recently completed visitor



concession/ticketing/restroom facility on September 4, 2009, during halftime of Page vs. Northern Durham, the first home varsity football game. Please come out to get this top-notch facility and the Page football season off to a great start! Support your Page student athletes by joining the Athletic Booster Club and you will be treated to a free Outback Steakhouse Booster Burger at the game.

The ABC wants to thank the Page Alumni and Friends Association again for all the financial support you have contributed to this project.

PAGE ALUMNI & FRIENDS OFFICIAL WEBSITE

The official web site for the Page Alumni and Friends Association is www.pagealumniandfriends.org. There are others that claim to be "the site," and it's fine to use those. But ours is FREE! Page grad Brad Earle ('71) maintains it for us and helps folks when they're preparing for a reunion. Thank you, Brad! We encourage you to use this as your Page "one-stop-shop."

From Brad, "We would like the classes to recognize the value, have some fun getting back together, and then return with a class gift that PAAFA can apply to the identified needs of Page." Contact Brad and he will help you set up your own web page on our **official site** or answer any questions you might have! Brad's contact info: pageHS@KBEarle.com or 336-510-4776.

www.pagealumniandfriends.org

CLASS REUNIONS

The Class of 1969 is having its 40th Reunion the weekend of the Page-Grimsley football game October 9–11, 2009. Saturday Night includes a "Meet and Greet" at Page and the reunion event at Sherwood. Sunday includes a worship service. Send contact information to Christine Calice at biggpagenc@yahoo.com or go to 1969.pagealumniandfriends.org. Please give your classmates this information.

The **Class of 1972** is working on a 38th reunion for 2010. The last one was the 20th in 1992 and the planners don't see the need to wait for two more years!!! Please send your name, address, email address, and phone number to Robin Stiles Moore at PageClassof72@gmail.com, Sandy Cardonick Lavender at slavender@charternet.com, or the official web site at 1972.pagealumniandfriends.org. Please share this information with any classmates, or let them know how to contact us.

The Class of 1979 is planning its 30-year Class Reunion for October 9-10, 2009. Email either Virginia Gentry Parker at parkervg@earthlink.net or Amy Wheeler at awheeler5@triad.rr.com to be added to our "1979 Reunion Communications" email distribution list. If you don't have email, call Virginia at 919-846-1928 and leave a message on how to best communicate with you. Join the Class of '79 Reunion facebook group – Page High School Class of 79. Visit our own personal website at www.page79reunion.com and register your profile on the web site. This web site will become our central depository of "Who's Who," what we're doing now, photos, etc.

The Class of 1980 is in the pre-planning stages of our 30th reunion. What do we need? Contact info for 1980 alumni and a few good folks to help us get it going! So to be a part of the festivities of the organizing, contact Lisa Strickland at LBS@gmail.com or 336-545-1230.

The Class of 1984 is planning its 25th reunion for the Page/Grimsley football weekend of Oct. 9-10, 2009. Send contact information to Carl Mabry at mabry.carl@gmail.com or go to the Class of 1984 Page High School on Facebook for information.

The Class of 1985 is gathering information for its 25th reunion in 2010. Contact Stephen Scott at ss.stephenscott@yahoo.com or 704-779-6194 to participate in the reunion or in the planning of it.

The Class of 1989 is planning its 20th reunion for October 9-10. On Friday night, '89ers will look for the "Class of '89" banner in the parking lot at the Page-Grimsley football game and Saturday night festivities will be downtown at the Kress Building. There will be a PayPal account set up for the \$45 cost. Contact info: Brian Herrington at brianherrington@hotmail.com or 336-259-2825; Jenny Clendenin Kiser at ekiser619@aol.com or 336-282-5073; or www.page1989.com.

The Class of 1990 is in the pre-planning stages of our 20th reunion. What do we need? Contact info for 1990 alumni and a few good folks to help us get it going. To be a part of the festivities or the organizing, please contact Alicia Patterson Cone at alcone6@yahoo.com.

The Class of 1994 is making plans for its Fifteen-Year Class Reunion. Please contact Allison and Andrew Medley at amedley@triad.rr.com with all contact information (address, email, phone number). Please spread the word, and let us know if you would be willing to help!

The Class of 1999 Ten-Year Reunion on Saturday, October 10, 2009, will be held at Studio B in Downtown Greensboro from 7:00 to 11:00 p.m. The price will be \$40 a head, which will include free drinks, food, music, and other surprises. Spouses, dates, and significant others are all invited. Payments can be made to pageclassof1999@gmail.com on www.paypal.com. Please continue to check the web site, www.pageclassof1999.webs.com as well as Facebook, for updates. If you have any questions, comments, or suggestions please send them to us. We look forward to

ALUMNI NOTES

David Holliday ('66) says, "Boy, what a time I had at Page. I loved the teachers and the students!"

Leesa Thomas Clardy ('82) and her husband Jim are the proud parents of a son, James Felix Clardy III, born December 31, 2008. They live in Charlotte and also have a two-year-old daughter Julia.

Let us know what you're doing! Send information or comments for the next installment of "Alumni Notes" to sgtysinger@triad.rr.com.

Ten classes are working on reunions: 1969, 1972, 1979, 1980, 1984, 1985, 1989, 1990, 1994, and 1999. If your class has missed a "milestone reunion," just make a different milestone. If you were a class officer, or if you have specific interest in getting a reunion for your class started, call some old classmates and let me know. We can help you get the information out.

Fifty years ago, the Class of 1959, was the first class to graduate from Page. With 57 graduates, it was the smallest. The Class of 1960 had only 91. The Class of 1961, the first class to attend Page all three years (high school was three years at that time), had 356 graduates. So maybe there's someone out there who would like to work on a combined class reunion, with these three classes, or with the Classes of '59 and '60. Let me know!

Help us find folks! Please send us your friends' or your children's names and addresses so we can get in touch with them! Moving? Please let us know about your change of address!

2008-2009 PAGE ALUMNI AND FRIENDS ASSOCIATION

Pirate Treasure		\$1,000-2,499	
Class	First Name	Last Name	Grad Name
1970	Leigh	Yost	Elrod
1972	Janet	Murphy	Murphy
1990	Sam	Bullard	Bullard
	Sally & Chris	Newman	

Buccaneer		\$500-999	
Class	First Name	Last Name	Grad Name
1963	Harry	Clendenin III	Clendenin
1970	Jane & David	Murphy	Land
1971	Dennis (Buddy)	Rankin	Rankin
	Pam & Alan	Duncan	
	Carolyn & Clyde	Ratcliffe	
	Susan & Larry	Tysinger	
	Susan & Bill	Veazey	

Anchor		\$100-499	
Class	First Name	Last Name	Grad Name
1959	Eddie C.	Mitchell	Mitchell
1961	Bill	Bookout	Bookout
1961	Joseph M.	Brantley III	Brantley
1961	Robert H.	LeGrand, Jr.	LeGrand
1962	Pam	Bookout	Caldwell
1963	Becky and Jim*	Compton	Compton
1963	Carole & Steve*	Loflin	Loflin
1964	Barbara	Curtis	Hoffman
1964	Winburn	King	King
1964	Stan	Sharpe	Sharpe
1964	Jo Ellen	Barley	Whitt
1964	Thomas E.	Tyson	Tyson
1965	Joan	King	Crutchfield
1965	Rick	Fuller	Fuller
1965	Robert (Bob)	Hunter	Hunter
1965	Jane	Whichard	Reinhardt
1965	Joan	Setzer	Throckmorton
1966	Claire	Davis	Brown
1966	Anne	Daffron	Cole
1966	Myra	Atkins	Comer
1966	Sue* & Vick*	Phillips	Edwards
1966	Pam* & Steve	Hassenfelt	Holderness
1966	David	Holliday	Holliday
1966	Anne	Millican	Howard
1966	Gary L.	Murphy	Murphy
1966	Gary	Murphy	Murphy
1966	Susan	Nisbet	Schenck
1966	Monica	Vaughan	Slate
1967	Carol* & Jim	Long	Myrick
1967	Judy	Calland	Strouth
1968	Kathy	Boyd	Baumgarner
1968	David	Dunker	Dunker
1968	Jim	Holbrook	Holbrook
1968	Nancy	Moore	Moore
1968	Richard	Neal	Neal
1968	Sharon	Morgan	Trull
1970	Emmy Lou	Burchette	Jeffress
1970	Rich* & Mabel*	Winslow	Livingston
1971	Hugh	Fraser	Fraser
1972	Mark Douglas	Green	Green
1972	Denise & Larry Milton*	Stanfield	Stanfield
1973	Carter	Davenport	Davenport
1974	Elizabeth (Buff)	Rickenbach	Kelly
1978	John	Rountree	Rountree
1979	Fred	Black	Black
1979	Matt	Bond	Bond
1979	Jeanne* & Mike	Twilley	Covington
1980	Richard	Beard	Beard
1980	Andy	Grolnick	Grolnick
1980	Matt	Regan	Regan
1981	David	Craft	Craft
1981	Dan	Singer	Singer
1983	Suzanne	Baisier	O'Donnell
1984	Walker	Poole	Poole
1984	Tim	Roberts	Roberts
1984	Michael	Russing	Russing
1984	Sharon	Barlow	Tutterow
1985	Anne	Cullen	Warlick
1986	Jonathan	Baynes	Baynes
1986	Charles	Wright	Wright
1987	Mike	Reynolds	Reynolds
1988	Juli	Desjardins	Jadick
1989	Kacee	Reynolds	Clendenin
1989	Duncan	Jones	Jones

1990	Sam	Bullard	Bullard
1991	Brandon	Frick	Frick
1991	Julius III	Rankin	Rankin
1993	Stephanie* & Stephen	Keaney	Dingman
1996	Rachel* & Matt*	Cobb	Barger
1996	Brantley	White	White
1997	Leigh	Wheeler	Brantley
	Clare & Mike	Abel	
	Becky & David	Barger	
	Knox & Dan	Barker	
	Margaret & Bill	Benjamin	
	Gay & Bill	Bowman	
	Stephen & Deb	Cobb	
	Kathy	Compton	
	Kris & David	Cooke	
	Jean & Mike	Cornwell	
	Kim & Michael	Cranford	
	Clara & Jim	Duggins	
	Carolyn & Tom	Duncan	
	Sandra & Pete	Ennever	
	Kit and Scott	Hargett	
	Beverly & Mark	Harrah	
	Terri & Steve	Hendrickson	
	Toni	Jones	
	Joanne & Don	Lahey	
	Rosa & Bill	McNairy	
	Susan & Jim	Melvin	
	Suellen & Tam	Milton	
	Kate & Sam	Morrow	
	Bettie & Steve	Olson	
	Donna & Donald	Pulitzer	
	L. Richard	Rawls	
	Robin and Stephen	Ringer	
	Karen & Charlie	Roer	
	Angie & John	Stratton	
	Ellen and Jeff	Todd	
	Judy & Bob	Wicker	
	Lynn & Art	Winstead	
	Terry	Worrell	
	Anne & Mark	Yarbrough	
	Judy & Steve	Yates	

Pirate Club		\$26-99	
Class	First Name	Last Name	Grad Name
1960	Joseph	Tippett	Tippett
1961	David A.	Amos	Amos
1961	Judith & Henry*	Cathy	Cathy
1961	Fred	Moore	Moore
1961	Chuck	Scott	Scott
1961	Michael	Wise	Wise
1962	Jackie	Wilson	Abrams
1962	Neal B.	Harrell	Harrell
1962	Buddy	Roberts	Roberts
1962	Bonnie	Amos	Wagoner
1962	Mary Alyce	Groman	Watson
1963	Jane	Scott	Davenport
1963	Mary	Glascok	Glascok
1964	Hunter, III	Galloway	Galloway
1964	Ron	Hartsook	Hartsook
1965	Shelton	Styers	Ayers
1965	Becky	Hartsook	Dagenhart
1965	Paul H.	Daimler	Dingeldein
1965	Anita	Zeigler	Parker
1966	Bettie* & Rick*	Lambeth	Altwater
1966	Linda	Haigh	Boswell
1966	George	Elam	Elam
1966	Tennie	Skladanowski	Ham
1966	Sandi	Banner	Moore
1966	Ed	New	New
1966	Richard	Smith	Smith
1967	Eleanor & Robert (Bob)	Jordan	Jordan
1967	Pat	Harris	Lind
1967	Gary B.	Moore	Moore
1967	Susan* & Larry*	Pearman	Wilson
1968	Susan & Hardee*	Mills	Mills
1968	Debbie	Smith	Smith
1968	Robert	Worth	Worth
1969	Nancy	Freeman	Barrett
1969	Mary & Bill*	Compton	Compton
1969	Bob	Yow	Yow
1970	Alex	Franklin	Franklin
1970	Kathy	Wueste	Payne
1971	Kent	Ridenhour	Ridenhour
1972	Bill	Baites	Baites
1972	Angeline	Scott	Boulware

1972	Anne and Jimmy*	Chamblee	Chamblee
1972	Thomas F.	Cochran	Cochran
1972	Michael	Leonard	Leonard
1972	Theresa	Shackelford	Nuckles
1972	Teresa	Nuckles	Schackelford
1973	Gary	Ballance	Ballance
1973	Emmett	McLean	McLean
1975	Susan	Pierce	Cecil
1975	Darylene	Hecht	Cothren
1975	Mary* & Bob*	Winslow	Martin
1976	Doug	Browne	Browne
1976	Beth	Ward	Plummer
1976	Sandra	Dillard	Robinson
1976	Sherry	Ralston	Rountree
1976	Mary	Speaker	Schott
1976	David C. III	White	White
1977	Cathy* & Bob	Lovejoy	Inabet
1978	Dean	Little	Little
1978	Cheryl	Trapp	Miller
1979	Whitney	Baird	Young
1980	Charles	Betts	Betts
1980	Revardale* & Charles*	Middleton	Lavant
1980	Wade	Meadows	Meadows
1981	John	Attayek	Attayek
1981	Stacey A.	Hayes	Poole
1982	Charles	Piper	Piper
1982	Leesa	Clardy	Thomas
1984	Stephanie & David*	Barnard	Barnard
1984	Felicia	Donnell-Self	Donnell
1984	Tammy	Dixon	Michalski
1984	Pam	Attayek	Ragland
1984	Scott F.	Sternberg	Sternberg
1985	Stephen	Scott	Scott
1985	Ashley	Simpson	Witcher
1987	Katherine	Smith	Phillips
1988	Sandy	Redmond	Redmond
1989	Amy	Jordan	Young
1993	Emily	Jones	Frost
1993	Chris	Jones	Jones
1993	Tricia* & Doug*	Shaw	Milton
1993	Kelly	Rogers	Smith
1995	Leigh* & Dave	Abraham	Tysinger
1996	Kevin	Gunter	Gunter
1996	Andrew	Payne	Payne
1998	Richard	Montana	Montana
1998	Elizabeth	Wicker	Wicker
2001	Laura	Winslow	Winslow
	Chris & John	Beaman	
	Lisa & Dean	Chislett	
	Mona G.	Edwards	
	Elizabeth & Edgar	Fisher	
	Rachel & Joe	Frick	
	Nancy & Erwin	Fuller	
	Mildred	Gaylord	
	Becky & Ron	Hampton	
	John	Hodges	
	Cheryl & Russ	Hunt	
	Tammy & Mike	Johnson	
	Olivia	Kelly	
	Beverly & Rusty	Lee	
	Brandon	Mack	
	William	Matherly	
	Bonnie & Dan	McAlister	
	Carter & Ashley	Overton	
	Betty K. & Roy	Phipps	
	Suzanne & Chuck	Seeger	
	Sandy & David	Thompson	
	Barbara & Jim	Williams	

Basic		\$25	
Class	First Name	Last Name	Grad Name
1959	Molly	Hall	Apple
1961	Mary "Muff"	Hanner	Caffey
1961	Sue	Medley	Medley
1961	Sue	Rabon	Terrell
1961	Marcia	Kass	Wechter
1961	Charles	Wilkins	Wilkins
1962	John Buck	Pearce	Pearce
1962	Marilyn	Gideon	Stadler
1964	Thomas	Fields	Fields
1965	Diane	Aycock	Aycock
1965	Barry	Paoloni	Paoloni
1966	Lyn	McCoy	McCoy
1966	Meriwether	Rhodes	Rhodes
1966	Vickie	Wooten	VonCannon
1967	Kay	Phillips	Anthony

2008-2009 PAGE A&F CONT'D.

1967 Jack	Brewer	Brewer
1967 John	Stanley	Stanley
1967 Anderson	Sweepston	Sweepston
1968 Rachel	Strauss	Bernstein
1969 Don	Smith	Smith
1971 Joyce	Kent	Barbee
1972 Carolyn	Maness	Maness
1972 Helen	Vaughan	Purgason
1972 Susan	Van Gelder	Scruggs
1973 Janette	Birdsong	Edwards
1973 Missy	Chance	Goodson
1974 Glen	McGirt	McGirt
1979 Virginia	Parker	Gentry
1980 Herb, Jr.	Tucker	Tucker
1981 Ron	Collier	Collier
1984 Sheri	Chamberlin	Clark
1985 Daniel	Craft	Craft

1985 Scott	Rhodes	Rhodes
1985 Theresa	Walker	Summers
1986 Kelli	Clark	Young
1989 Lawrence	Cox	Cox
1989 Terry Leon	Hutchens	Hutchens
1992 Anna-Maria* & Shamus	Kahl	Duggins
1992 Marty* & Brian	Sumner	Long
1998 Anne	Stevens	Stevens
1998 Parker	Wright	Watkins
2005 Maggie	Lee	Lee
2006 Alexandra	Lahey	Lahey
2008 Katie	Johnson	Johnson
2008 Cole	Lee	Lee
2008 Jeremy	Sandercock	Sandercock
Charlie	Vance	Vance
Sherry	Bailey	
Maura	Barber	

Gail & Everette	Bentley
Carol & Ben	Davis
Joan & John	Dilworth
Barry	Dooley
Martha	Duncan
Cathy & Brian	Fitzgerald
Marilyn	Foley
Jenny & Bob	Forman
Rose & Alfred	Garvey
Nancy	Kenerly
Sherry	Lipsky
Sandy & Terry	McGauvran
Phyllis & Paul	Parker
Elizabeth	Shull
Bob	Smith

Corporate Sponsor**Brad Earle****Class Gifts**

Class of 1978	\$1500
Class of 1998	\$180
Class of 2007	\$5000

Are you looking to replace a lost yearbook? There are some extras from various years. Call Page at 336-370-8200, ask for the yearbook room, and leave a message. If you're lucky and the year you are looking for is there, the cost is \$40 plus shipping (or \$40 if you come by the school to pick it up). The cost of the 2009 yearbook is still \$70.

IN HONOR OF**Joseph M. Brantley III ('61)** in honor of **Rebecca Brantley Hancock ('91)** and **Leigh Brantley Wheeler ('97)****Buddy Roberts ('62)** in honor of **all Veterans of Viet Nam.****Carole and Steve ('63) Loflin** in honor of **Lindsay Loflin, Jr. ('91)****Shelton Ayers Styers ('65)** in honor of **Brian, Cynthia, and Lucy Styers****IN MEMORY OF****Mary "Muff" Caffey Harner ('61)** in memory of **Iris Hunsinger****Marcia Wechter Kass ('61)** in memory of **Bill Flynn ('61)****Joan Throckmorton Setzer ('65)** in memory of **Barbara Throckmorton ('59)****Anne Cole Daffron ('66)** in memory of **Alan Cole ('70)****David Holliday ('66)** in memory of former principal, **Luther Medlin****Meriwether Rhodes ('66)** in memory of my brother, **George Michael Rhodes ('67)****Glenn McGirt ('74)** in memory of **Dennis Light ('74)****William R. (Richard) White ('74)** in memory of **Bill Stephanz ('76)****Revardale ('80) and Charles ('80) Middleton** in memory of **Tony Bryant****Stephanie and David ('84) Barnard** in memory of **Greg Treadwell ('84)****Anne Warlick Cullen ('85)** in memory of **Tony Bryant****Carter and Ashley Overton** in loving memory of **Mark Johnson ('69)****Susan and Larry Tysinger** in memory of **Mark Johnson ('69)** and **Phyllis Lane White**, mother of past principal **Terry Worrell****Olivia Kelly** in memory of **Jelton King ('72)****Terry Worrell** in loving memory of her mother, **Phyllis Lane White**

2007-2008 PAGE ALUMNI AND FRIENDS ASSOCIATION

Pirate Treasure \$1,000-2,499

Class	First Name	Last Name	Grad Name
-------	------------	-----------	-----------

Sally & Chris
Susan & Bill

Newman
Veazey

Buccaneer \$500-999

Class	First Name	Last Name	Grad Name
-------	------------	-----------	-----------

1960 Fran & Tim*
1963 Harry H.
1966 Pam
1970 Jane* & David S.*
1972 Janet
1980 M. Brett
1986 Charles
Pam & Alan
Barbara
Julie & Danny
Bettie & Steve
Jeri & Peter

Lambeth
Clendenin
Hassenfelt
Land
Murphy
Smith
Wright
Duncan
Kretzer
Manning
Olson
Whitfield

Anchor \$100-499

Class	First Name	Last Name	Grad Name
-------	------------	-----------	-----------

1959 Eddie C.
1961 Bill
1961 Joseph M. III
1961 Donald (Don)
1961 Kate & Jimmy*
1962 Pam
1962 Marilyn
1963 Richard A.
1963 Mary G. Rose
1964 Susan
1965 David
1965 Rick
1965 Anita
1966 Linda
1966 Claire
1966 Sue* & Vick*
1966 David L.
1966 Ann & Gary
1966 Sandi
1966 Ginni
1966 Susan
1966 Monica
1966 Carolyn
1967 Carol* & Jim
1967 Judy
1967 Sara Jo
1968 David
1968 Isaac Duncan (Dee)
1968 Jay
1968 Susan & Geoffrey*
1968 Richard
1968 Pete
1968 Melissa* & Jerry
1968 Sharon
1969 Julia
1969 William L. (Bill)
1969 Susan
1970 Cynthia* & Wesley
1970 Mabel* & Rich*
1970 Barbee
1971 Charles D.
1972 Thomas F. (Tom)
1972 John
1973 Harold* & Mary Jane
1973 John D. Jr.
1974 Elizabeth (Buff)
1974 Susan & Scott*
1974 Donald* & Kim
1976 Sherri
1977 John M., Jr.
1977 Suzie* and Kim
1978 John
1978 Lewis D.
1979 Kam
1979 Jeanne* & Mike
1980 Becky Schiffman
1980 Richard
1981 Johnny
1981 David B.
1981 Dan

Mitchell
Bookout
Brantley
Brooks
Schlosser
Bookout
Gideon
Beavers
Taylor
Singer
Clark
Fuller
Zeigler
Haigh
Davis
Phillips
Holliday
Murphy
Banner
Lineberry
Nisbet
Vaughan
Green
Long
Calland
Safrit
Dunker
Ham
Kelly
King
Neal
Pearce
Harrelson
Morgan
Sypher
Compton
Clark
Johnson
Winslow
Ham
Bottomley
Cochran
Hammer
Beavers
Watson
Rickenbach
Lineberry
Moore
Ralston
Wolfe
Addington
Rountree
Tysor
Barnard
Twilley
Schiffman
Beard
Attayek
Craft
Singer

1982 Lane
1983 Walker L.
1984 Kathryn
1984 Hollie
1984 Landis
1984 Pam
1984 Timothy D.
1985 Catherine* & Sam
1985 Douglas W.
1987 Christina* & Robb
1990 Richard
1991 Brandon L.
1991 Kate* & Brian
1991 Jimbo
1991 Anne* & Pearce*
1991 Julius III
1991 Tom
1992 Brian & Marty*
1993 Stephanie* & Stephen
1993 Mary
1994 Brian
1995 Mary Lindsay
1996 Megan* & Rob*
1996 Brantley
1997 Katherine (Kay)
Kirt & Ken
Becky & David
Margret & Bill
Gay & Bill
Kris & David
Shirl B.
Clara & Jim
Carolyn & Tom
Sandra & Pete
Nancy & Dennis
Rachel & Joe
Nancy & Erwin
Terri & Steve
Sharon & Jack
Teresa & Sean
Tresa & Rodger
Colleen & Glen A., Sr.
Jenny & Robert
Rosa & Bill
Suellen & Tam
Kate & Sam
Susan
Roberta & Jerone
L. Richard
Nancy & Charlie
Rebecca & Steve
Kristine
Karen & Charlie
Millie & Bill
Terry & Bryan
Diane & Dwight
Ellen & Jeff
Carole & Douglas
Sylvia & Richard
Lynn & Art

Schiffman
Poole
McLawnhorn
Stack
Best
Attayek
Roberts
Froelich
Maier
Hutchison
Broadwell
Frick
Pierce
Melvin
Landry
Rankin
Snow
Sumner
Keaney
Baker
Marshall
Evans
Morgan
White
Stump
Austin
Barger
Benjamin
Bowman
Cooke
Davis
Duggins
Duncan
Ennever
Franks
Frick
Fuller
Hendrickson
Hicks
Kenny
Kleisch
Long
McCall
McNairy
Milton
Morrow
Nesbit
Pearson
Rawls
Reid
Renne
Revington
Roer
Ronemus
Smith
Stone
Todd
Torn
Vanore
Winstead

Pirate Club \$26-99

Class	First Name	Last Name	Grad Name
-------	------------	-----------	-----------

1961 Bob
1961 Camilla* & Michael*
1962 Jackie
1962 Carole & Buck*
1962 Buddy
1963 Eric
1963 Mary
1963 Cecil
1963 Sarah
1964 Mary Anne
1964 Thomas F.
1964 Ron
1965 Rebecca
1965 Paul H.
1965 William D.
1965 Steve
1966 Bettie* & Rick*
1966 Myra
1966 Tennie
1966 Bob
1966 Lynnie

Bettis
Hendrix
Wilson
Pearce
Roberts
Garrison
Glascok
Norwood
Womack
Costello
Fields
Hartsook
Hartsook
Daimler
Matherly
Rex
Lambeth
Atkins
Sklandanowski
Heath
Mitchell

1966 Ed
1966 Kimberly
1966 Anne
1967 Pamela & David*
1967 Jack
1967 A. Wayland
1967 Susan* & Larry*
1968 Kathryn
1968 Linda
1968 Gail C.
1969 Ed
1969 Louise
1969 Eleanor
1969 Bailey
1969 Joy
1969 Bob
1970 Nancy
1970 Treva
1970 Robert
1970 Kathryn
1971 Diana
1972 Mebane
1972 Linda
1972 Laura
1972 Theresa
1972 Bill, Jr.
1972 Melba
1973 Bill
1973 Janice
1973 Emmett E.
1973 Aaron
1974 Ted
1974 Jack Jr.
1975 Valeri
1976 Doug
1976 Ann
1976 Tony
1976 David C., III
1978 Dean
1979 Ted
1979 Ellen
1980 Keith
1980 Charles* & Revardale*
1980 Cameron & Jimmy*
1980 Mark
1980 William W.
1982 Charles
1982 Jim
1982 Leesa
1983 Steve
1984 Melinda
1984 Felicia
1984 Tammy
1984 Scott F.
1985 Anne
1985 Ashley
1987 Nathan
1987 Tom
1987 Kathy
1987 Mike
1988 Janet
1988 Yolanda N.
1989 Kacee
1989 Graham E.
1989 John
1989 Amy
1990 Carolyn
1990 Terry
1991 Julie
1992 Elizabeth "Wynne"
1993 Chris
1993 Tricia* & Doug*
1993 Kelly
1995 Anna* & Rob
1995 Margaret* & James
1995 Leigh* & Dave
1996 Sharon & Ryan*
1996 Matt
1996 Kevin B.
1996 R. Andrew
1996 Patrick
1997 Rachel
1997 Leigh
1998 Graham
1999 Shannon
2000 Corinne* & Kevin*

New
Jordan
Thomas
Bean
Brewer
Cooke
Pearman
Roberson
Mendenhall
Murphy
Abrams
Britt
Lynn
Barnett
Campbell
Yow
Abrams
Brackett
Pittman
Morgan
Michel
Ham
Ball
Herring
Schackelford
Roane
Altman
Anderson
Mahan
McLean
Steele
Froneberger
McKnight
Froneberger
Browne
Culley
Collins
White
Little
Goslen
Nesbit
Hudson
Middleton
Reitinger
Simpson
Watson
Piper
Rucker
Clardy
Hennings
Rucker
Collins
Donnell-Self
Dixon
Sternberg
Cullen
Simpson
Duggins
James
Smith
Reynolds
Caldwell
Nichols
Reynolds
Fuller
Sample
Jordan
Meade
Matthews
Newcomb
Schenck
Jones
Shaw
Rogers
Harper
Chase
Abraham
Clark
Cobb
Gunter
Payne
Urban
Cobb
Wheeler
Harrelson
Norman
Jones

Newman
Perkerson
Bean
Brewer
Cooke
Wilson
Culberty
Mendenhall
Murphy
Abrams
Denny
Grant
Sellars
Wrenn
Yow
Elkins
Gross
Pittman
Wolfe
Isaacson
Ham
Lyon
Murray
Nuckles
Roane
Winslow
Anderson
Gunby
McLean
McLean
Steele
Froneberger
McKnight
Gordon
Browne
Cochran
Collins
White
Little
Goslen
Hennings
Hudson
Lavant
Reitinger
Simpson
Watson
Piper
Rucker
Thomas
Hennings
Collins
Donnell
Michalski
Sternberg
Warlick
Witcher
Duggins
James
Phillips
Reynolds
Caldwell
Nichols
Clendenin
Fuller
Sample
Young
Phipps
Smith
Heard
Murphy
Jones
Milton
Smith
Frick
McNairy
Tysinger
Clark
Cobb
Gunter
Payne
Urban
Barger
Brantley
Harrelson
Bailey
Berry

2007-2008 PAGE A&F CONT'D.

Pirate Club		\$26-99	
Class	First Name	Last Name	Grad Name
2000	Catherine Grace	Duncan	Duncan
2000	Allison	Williams	Upchurch
	Margaret & Howard	Arbuckle	
	Alexa & Bill	Aycock	
	Maura	Barber	
	Chris & John	Beaman	
	Lou	Bloecher	
	Lisa & Dean	Chislett	
	Elizabeth & Edgar	Fisher	
	Catherine & Brian	FitzGerald	
	Jenny & Bob	Forman	
	Rose & Alfred	Garvey	
	Mildred	Gaylord	
	Jane & Paul	Gibson	
	Cindy	Gullege	
	Paula & John	Hodges	
	Olive & William	Jordan	
	Linda M.	Kidd	
	Joanne & Don	Lahey	
	Bonnie & Dan	McAlister	
	Margaret	Montana	
	Irene M.	Moore	
	Nancy & Zack	Osborne	
	Carter & Ashley	Overton	
	James E.	Rawlinson	
	Suzanne & Chuck	Seeger	
	Sandy & Dave	Thompson	
	Katy & Glenn	Williamson	
	Roger T.	Wood	
	Caroline & Kyle	Young	

Basic		\$25	
Class	First Name	Last Name	Grad Name
1959	Molly	Hall	Apple
1959	Walter	Brown	
1960	Valerie	Fennell	Fennell
1961	Betsy	Lowman	Caudel
1961	Kathy	Dallas	Dallas
1962	Richard L.	King	King
1962	Frederick	Moore	Moore
1962	Mary Alyce	Groman	Watson
1964	Caroline	Crow	Snaveley
1964	Jo	Barley	Whitt
1964	Melinda	Ogburn	Wyrick
1965	(Marsha) Diane	Aycock	Aycock
1965	Jane	Teer	Vaughan
1966	Pat	Ellington	Brooks
1966	Elaine	French	Conti
1966	Dacia	Osborne	Hill
1966	Cathy	Keagy	Kingsbury
1966	George A.	Neal	Neal
1966	Barbara Carol	Vatz	Vatz
1966	Vickie	Wooten	VonCannon
1967	Katherine (Kay)	Phillips	Anthony
1967	Sharon	Hammerman	Freibert
1967	John	Stanley	Stanley
1967	Harry L.	Watson	Watson
1969	Anne	Ellis	Detgen
1971	Joyce	Kent	Barbee
1971	Beth* & Brad*	Earle	Collins
1971	Tim	Kelly	Kelly
1975	Dianne	Hiatt	Ford
1975	Mary* & Bob*	Winslow	Martin
1976	Elizabeth	Hurd	Buie
1977	Cathy* & Bob	Lovejoy	Inabet

1978	Christy & Karl*	Anderson	Anderson
1978	Nollie W., Jr.	Neill	Neill
1979	Harriet	Miller	Foster
1979	Brenda* & Greg*	Yates	Strandberg
1980	Marie	McEvoy	Toyama
1984	Debbie	West	West
1985	Daniel C.	Craft	Craft
1985	Scott Burgess	Rhodes	Rhodes
1986	Corey D.	Pysher	Pysher
1987	Erik	Kiser	Kiser
1989	Jenny	Kiser	Clendenin
1989	Terry L.	Hutchens	Hutchens
1990	Elizabeth	Glasgow	Gulledge
1995	Lindley	Webb	Banner
1995	Claire* & Brian*	Cooke	Long
1998	Parker	Wright	Watkins
2002	Bynum	Hoekstra	Hoekstra
	Karen	Berg	
	Mary & John	Broome	
	Richard	Cartwright	
	Charles H., Jr.	Cockerham	
	Joan & John	Dilworth	
	Barry E.	Dooley	
	Marilyn	Foley	
	Elizabeth	Hackney	
	Martha Read & Eric	Hoekstra	
	Mohamed	Jaziri	
	Tammy & Mike	Johnson	
	Nancy	Kenerly	
	Mr. & Mrs. Philip	Legnetti	
	Brandon	Mack	
	Teresa	McNeill	
	Christy & Dean	Mitchell	
	Pat & Sandy	Vreeland	
	Gay & John	White	

IT HAPPENED AT PAGE.....(from past Pages by Page editions)

1959	Page football won over the Bessemer Whippets 26-6 in conference play. They are tied for the conference lead with Leaksville-Spray Morehead.	1990	The Student School Board Action Group (SSBAG) recommended the following : (1) A mandatory year-long course on race relations and black history, (2) sexuality counselors, and (3) a ban on teacher smoking.
1967	On March 5, at the Greensboro Coliseum, Paul Revere and the Raiders played before a "screaming, crying group of girls." Warm-up acts included The Daydreams, The Showmen, Willy Tee and the Magnificents and The Tams. Ticket cost was four dollars.	1997	Senior Edition Spoofs : Most Likely to Drive The Same Car Forever—Tom Dolinger; Most Likely To Give Tours of Myrtle Beach Police Station—TJ O'Sullivan; Most Likely Not to Tell You About Their Boyfriends—Lynn Cromer, Jennifer Harris, Leigh Redden
1971	Newspaper ad reads "The 'In-Scene' for the Page Lunch Bunch" is Burger Chef, 400 East Cornwallis.	2001	Homecoming and Pirate Queens are Meredith Bersch, Lisa Cleveland, and Sonya Lamb. Question—Which member of the 2001 Homecoming Court came to the 2002 Prom wearing a prom dress made out of duct tape? <i>Zack Osborne</i>
1982	Newspaper ad : "Galaxy I Family Amusement Center—Specializing in the most up-to-date video games, including Donkey-Kong and Pac-Man." Address was 411 Tate Street.		
1985	Superlatives include Richard Jones (Most Dependable, Most Likely to Succeed, Best All-Around) and Stephanie Wyatt (Most Dependable, Most Likely to Succeed, Most Intellectual).		

The Page Alumni and Friends is a non-profit corporation which has been determined to be a tax-exempt organization pursuant to Section 501(c)3 of the Internal Revenue code. The entire amount of the contributions may be deducted as a charitable contribution under the federal income tax laws, subject to limitations contained therein. Consult your tax advisor for information as to the application of these laws to your particular situation.

SAVE A TREE! If you are receiving multiple mailings or if you have received this in error or if you wish to be removed from the mailing list, please let us know.
sgtysinger@triad.rr.com

The **PAGE**
Newsletter of the
Page Alumni and Friends
Association

Editor.....Susan Tysinger
Publisher.....Cathy Ingram

Page Alumni and Friends Association
Page High School
PO Box 39616
Greensboro, NC 27438

Non-Profit Org.
US Postage
PAID
Permit No. 411
Greensboro, NC

This fiscal year is July 1, 2009 through June 30, 2010.

Newsletter of the Page Alumni and Friends Association

2009-2010 PAGE ALUMNI AND FRIENDS ASSOCIATION Membership Form

www.pagealumniandfriends.org

Name(s) _____

Maiden name (if applicable) _____

Graduate () _____ I'd like to help on a committee. () _____

Parent () _____ I'd like to be on the Board. () _____

Friend () _____ Add me to the e-mail meetings and "help" list. () _____

Year(s) you or your child(ren) graduated (or will graduate) _____

Address _____ City _____ State _____ Zip _____

Phone #() _____ E-mail _____

(Please print ever so plainly!)

_____ \$25 Basic _____ \$1,000-2,499 Pirate Treasure _____ Use my membership \$ for the complex only.

_____ \$26-99 Pirate Club _____ \$2,500-4,999 Swashbuckler _____ Use my membership \$ for scholarships only.

_____ \$100-499 Anchor Club _____ \$5,000+ Captain's Table _____ Use my membership \$ for the Alma Pinnix Bank.

_____ \$500-999 Buccaneer _____ _____ Use my membership \$ for the Auditorium Lobby.

_____ _____ Use my membership \$ where you need it.

_____ My donation is in (honor/memory of – circle one) _____

All members' names will be listed in the newsletter. Below, please write any updates, comments, or alumni information you'd like included in our next newsletter. ***YOUR GENEROSITY IS GREATLY APPRECIATED!!!***

Mail to: **Page Alumni and Friends Association**, PO Box 39616, Greensboro, NC 27438.

All membership donations are TAX-DEDUCTIBLE.