



The PAGE



Page High Forever

FROM THE PRESIDENT...

Spring/Summer 2011

As I write this letter for our tenth edition of **The PAGE**, I am grateful to all of you who have upheld our efforts, and pleased with what we have been able to accomplish. But much of this would not have happened without the diligence of a few.

The Executive Board shapes the work our Association does. Without the enthusiasm and hard work of Page parent Susan Veazey, alumnus Charles Wright ('86), and parent/alumnus Al Garvey ('80), there's no way we would have achieved what we have. We meet regularly to discuss initiatives, what's working and what's not, how to increase membership. Susan V. keeps meeting records, Charles sends our monthly e-newsletter, and Al guards the money and files tax reports. We plan the meetings, bring refreshments, and make things happen "behind the scenes." Thank you, Susan, Charles, and Al for your roles in making our Association a success.

Others have also taken roles that have continued through the years. Five years ago, former Page parent Cathy Ingram agreed to be the publisher for **The PAGE**. I send her the information, and she puts it on the pages. Karl Anderson ('78) showed up for a meeting in the Page Media Center and quietly volunteered to lead the endeavor to re-beautify Alma Pinnix Hill. He continually replaces plants when needed and makes sure the irrigation system's working. Using his professional expertise, Brad Earle ('71) answered our call for the need for a web site by creating one for us and keeping it updated. For the past four years, Stephanie Keaney ('93) has diligently led the selection process for the Page/Grimsley Golf Neese's scholarships in the fall and the Alumni and Friends scholarships in the spring. Thank you Cathy, Karl, Brad, and Stephanie.

The work of all of these volunteers and others translates into thousands of volunteer hours a year.

While our successes have been many, our support from Page alumni falls vastly short of our expectations. This 2011-2012 year, with a newsletter circulation of 6600+, our membership numbers less than 300. **You** can change that. Fill out the form and send in your membership donation today. Let's set a goal of at least 1,000 members for the coming 2011-2012 year. When a friend or fellow classmate asks if you will join our Association, answer with a resounding "yes."

Spread the word, become a class agent, come to meetings. We do have a good time! Let us hear from you!

Susan Tysinger, President
sgtysinger@triad.rr.com

PAGE ALUMNI AND FRIENDS ASSOCIATION LEADERSHIP

Officers

Susan Tysinger	President
Charles Wright ('86)	Vice President
Susan Veazey	Secretary
Al Garvey ('80)	Treasurer
Marilyn Foley	Principal

Board of Directors

Karl Anderson ('78)
Jeanette Lineberry Billings ('84)
Nathan Duggins ('87)
Brad Earle ('71)
John Graham
Johnny Hodges
Dean Little ('78)
Julie Longmire
Frank Maxwell
Liz Mills
Ashley Witcher Simpson ('85)
Debbie West ('84)
David White, III ('76)

ALUMNI AND FRIENDS ASSOCIATION MEETINGS

Thursday, September 15
Thursday, November 10

5:30 pm at Sherwood Swim and
Racquet Club, across from Page.

ALL are welcome!

The ONLY official Page Alumni and Friends web site is www.pagealumniandfriends.org. Others may look like it, and they may even sell the t-shirts. But they have nothing to do with Page High School or our Page Alumni and Friends Association.

SAVE A TREE!! Printing and mailing each newsletter costs the Association valuable \$. So, if you have no interest in joining our Association, *please* let us know so we can remove you from the distribution list.

FROM THE PRINCIPAL



As we, the staff, reflected on this past year here at Page, I kept coming back to the same images. This year was much like the past several years in terms of our students' achievement. We once again topped the amount of scholarship money earned by our wonderful students. In addition to the more than \$11 million in scholarships, Page had more individual scholarships than any other school. The number of students enrolling in our IB program has topped our expectations, with over 125 new ninth graders accepted into this most challenging academic program. Our student population is now almost 1900, the second largest school in the district.

But even with all these great accomplishments from our students, what stands out to me about this year is the overwhelming kindness and support students have shown to each other. The rallying of our community in times of sadness, and the dedication of our staff in helping students deal with the grief while also looking for ways to deal with their own, have been more than one could even hope for. Within a period of two weeks, Page lost two students: a former football player, a 2010 graduate who had remained close to many students; and a senior tennis player, a very kind and personable young man who found humor in everyday situations.

These back-to-back events rocked us all to the core, as we searched to find reason in both of these tragedies. Even in these most difficult of circumstances, the Page community rose to the occasion as they surrounded each other with support and love. It truly brought out the best in everyone and exemplified why Page is such a great school. The kindness shown continued throughout the rest of the school year as our seniors came together as one united group to remember and to celebrate graduation.

The senior class of 2011 joined with the Class of 1961, the first graduating class to attend Page for their entire high school years, to present to us with a wonderful gift. The past and the present, separated by fifty years, left a legacy for all of us to enjoy for many years to come.

Each of you that walked the halls of Page has become a part of Page that can never be erased, as it has become a part of you. This will always be your school. On behalf of all the students and the staff, we thank you for your support. We look forward to completing the additions and renovations to our athletic fields and hosting all our returning alumni.

Marilyn Foley, Principal

PAGE STUDENTS "MAKE A DIFFERENCE"

Character Development has been a key theme this year in all Guilford County Schools. When Page's Art Department was asked to come up with a project that dealt with Page's Character Development program, the idea for the "Make a Difference" mural was born.



The mural became a volunteer project for the National Art Honor Society. These students came in on a couple of Saturdays to get the center part of the mural painted on the wall, *Our Pirate Promise to....Make a Difference*. Seniors received pledge cards asking them to reflect on one thing they could do to "make a difference" at Page, in Greensboro, or anywhere in the world. A signed and filled-in pledge card then became each senior's ticket to add his handprint and initials to the mural. Art Honor Society students were standing by during lunch to exchange cards for a handful of paint.

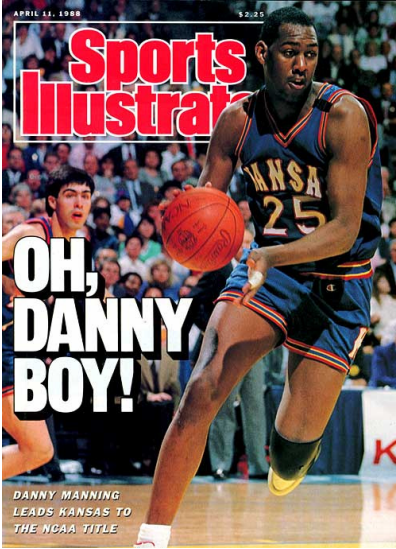
Around 300 seniors made a pledge to do something to make the world a better place, whether it was being a kinder family member or inventing something that would improve the quality of life on earth. Thank you to the newest class of Page Alumni for your part in making a positive difference in our world.



LINK TO HARRIS TEETER #1861

We invite all Harris Teeter shoppers to link your VIC # to Page High School by signing up as you check out. Already linked to another? You may link to as many as five. It costs you nothing but sends a percentage of your HT brands sales to Page. RELINKING EVERY AUGUST IS NECESSARY.

DANNY MANNING...THE PLAYER, THE COACH



Danny Manning played high school basketball at Page until his family moved to Kansas in the summer of 1982, right before his senior year. He is one of the greatest players in Kansas basketball history, named the 1988 NCAA Final Four Most Outstanding Player in Kansas' national championship win over Oklahoma. After being the overall Number One NBA draft pick in 1988, his professional playing career spanned fifteen years. In 2008, Danny was named to the Guilford County Sports Hall of Fame for his notable play at Page, the same year he was inducted into the National Collegiate Basketball Hall of Fame. Thank you, Danny, for taking time out of your busy schedule as assistant coach at Kansas to answer a few questions.

What are your best basketball memories of playing at Page and your best memories away from the court?

Winning the state championship and summer pickup games are my fondest basketball memories. Special times off the court were hanging out with friends after football games and visiting with friends during lunch period.

Your performance in the 1988 NCAA championship game against Oklahoma is considered by many as the best individual performance in a national title game. What do you remember about it?

I remember after the game, sitting in the locker room talking with my teammates about the game and season, and we realized this would be the last time we all played together.

Your national championship season at KU is memorable for many fans. How did you feel about being called "Danny & The Miracles"?

I never liked that title for our team. We won because we played together as a unit. We didn't have the most talent but we bought into Coach Brown's system and accepted our roles.

Where would you have played in college if Kansas had not been a factor in the decision?

I don't know for sure, but State and UNC were two other colleges I was interested in.

You may be the only NBA player who returned to full service after having reconstructive surgery on both knees. How did you do it?

I was very fortunate to return to the court after three ACL surgeries. I had a great doctor, great rehab therapists, and I was a little stubborn in the fact that I really wanted to make a career in the NBA.

Please bring us up to date on your own family.

I've been married to my wife Julie for 21 years now. We have two kids – Taylor, twenty-year-old sophomore at Kansas, and Evan, an eighteen-year-old who will be attending New Hampton Prep School in the fall.

Do you ever get back to Greensboro or North Carolina?

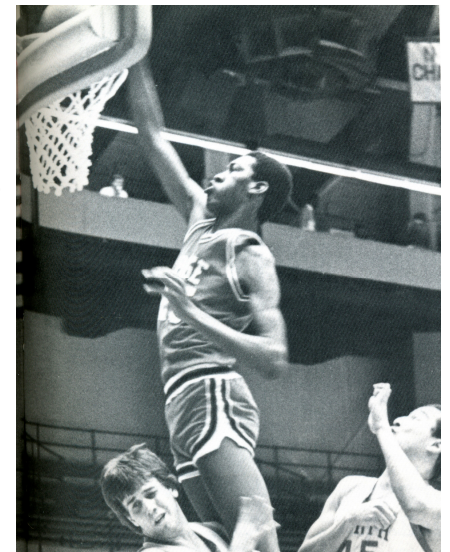
I have been back to Greensboro some, but not a lot. I have been back to NC lately to recruit.

You are now coaching at Kansas. Do you hope to move to a head coaching job in college basketball?

Yes, I do have visions of being a Head Coach in college.

Please tell us what you are doing nowadays away from basketball.

Well, with my current job there is no "away from basketball" (hahahaha!!!). I do enjoy attending my kids' activities. Taylor plays volleyball here at Kansas, and my son is a basketball player. Other than that, just spending time with my family is great.



Danny Manning dunks over a member of the UNC J.V. basketball team in a scrimmage in the fall of 1982 played in Carmichael Auditorium

PAGE WINS METRO 4A WACHOVIA CUP AND SCORES IN THE CLASSROOM

Page won the Metro 4A Wachovia Cup (formerly known as the Wachovia Trophy) for the 2010-11 school year. This award is sponsored by Wachovia and the NCHSAA, and it recognizes the high school that achieves the best overall athletic performance in its conference, based on a point system established by each conference.

The summation of Page's sports teams' finishes within the conference earned Page this year's Metro 4A Wachovia Cup. Teams that finished first in the conference were football, men's soccer, men's basketball, and men's tennis. Teams finishing second were men's cross-country, women's cross-country, women's golf, volleyball, men's swimming, and women's swimming.

Besides their athletic success, 17 of the 24 varsity sports teams were named Scholar-Athlete Teams. This designation is for teams having a 3.1 or better GPA on an unweighted 4.0 scale. These teams are Men's Golf, Soccer, Swimming, Lacrosse, Tennis, and Cross Country; Women's Golf, Basketball, Tennis, Swimming, Softball, Lacrosse, and Cross Country; and Cheerleading, Baseball, Softball, and Volleyball. Exceeding that, the **Women's Golf** and **Women's Tennis** Teams each had the **second highest GPA in the state** for their respective sports. Congratulations, Student-Athletes!

WINSTON GLASCOCK PIERCE MAKES A MARK IN EDUCATION



Winston Glascock Pierce, a 1984 Page alumna, is the principal of Farmington Woods IB/PYP Magnet Elementary School in Cary. The Magnet Schools of America recently awarded Farmington Woods with the *Elementary Magnet School of Excellence Award*. We are proud of the contributions Winston is making in the world of education. A few Q&As for Winston.....

Where did you go for your higher education?

I graduated from Page in 1984 and St. Mary's College in 1986. I then received my BA, MEd, and MSA (Master's in School Administration) from UNC-CH.

Describe your career path?

I taught elementary school for eleven years, was an assistant principal for five years, and have been a principal for over six years. I have been here at

FWES since February 2010.

How long has it been an IB/PYP school?

FWES was authorized by the International Baccalaureate program to implement the Primary Years Programme (PYP) in 2003, the *first* PYP program authorized in NC. PYP is the IB program for elementary students.

What was the process for the school's nomination?

We submitted a lengthy application to the Magnet Schools of America (MSA) Organization, sharing academic achievement data, diversity information, and curriculum innovation strategies in place. Of the 227 elementary applications submitted, five were chosen for site visits. Our award and recognition came with \$2500 to support our magnet program.

Did you always plan to be a teacher or principal?

I knew in the second grade that I wanted to be a teacher. Hanging in my office is a journal entry from one of my second-grade journals that my mom saved and framed for me. In my best handwriting on classic story paper with a picture at the top it reads: "When I grow up I will be a teacher. I will be nice to the children. They will be good for me and they will like me.- Winston" I love going to work every day and my students love seeing my second-grade work hanging on the wall in my office.

Did anyone at Page have an influence on where you are today?

The IB/PYP program emphasizes student inquiry and thinking. I remember the years in John Meyer's classroom (first at Mendenhall, then at Page). He consistently required inquiry and thinking in all that he assigned and in his approach to learning. I have often shared examples of engaging work that required thinking when working with teachers new to the program as examples of how to emphasize the thinking.

PAGE GRIMSLEY GOLF TOURNAMENT

Signups for the Fifth Annual Page/Grimsley Golf Tournament are underway. This year the tournament will be played on **Saturday, October 1**, the day after the Page/Grimsley football game. Both Bryan Park courses will host 288 golfers playing for the school of their choice, playing for bragging rights that THEIR school will go home with the trophy. It's sad to say, but the P/G Tournaments of 2007, 2008, and 2010 were all won by Grimsley, while 2009 has been the only year Page has laid claim to the title.

So brush off your golf shoes, call your old Page buddies, and go to the web site at pagegrimsleygolf.com to sign up for a great day of golf, laughs, and camaraderie! The price is right, only \$85 – and it's for a great cause. Proceeds are split evenly between the two schools' athletic departments (about \$10,000+ each). Golf sponsor Neese's Sausage awards two \$1,000 scholarships to athletes at each school.

Procrastinate and you'll get left behind! The tournament has sold out every year!

Johnny Hodges, Page/Grimsley Golf Committee
Pagegrimsleygolf.com



L-R: Karl Anderson, Gred Ccurrent, Tony Collins, and Garson Rice

Do you own a business? Run a service? Are running for office? Sponsor a hole at the October 1, 2011, Page-Grimsley Golf Tournament. Go to pagegrimsleygolf.com for more info.

PIRATES IN THE COMMUNITY

One of my favorite things about living in Greensboro is running across old classmates and other alumni from Page. Recently I had lunch with PAFA Treasurer Al Garvey at Jersey Mike's off of State Street. As we were waiting our turn to order, we noticed the boards on the wall that list all the groups in the community that this particular store had donated their "Brownie Sales" towards. In the past three years, Jersey Mike's has donated over \$2,500 towards different groups and clubs at Page High School. Jersey Mike's donates the ingredients and the time to make these "best in the world" brownies, and they sell for \$1 each. All proceeds are given back to organizations in the community.

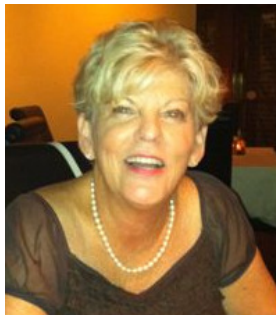


And you ask....Who is in charge of these brownies at the local Jersey Mike's??? Well, the answer will make you proud: **JACKIE GREEN McCOY** - PAGE PIRATE class of 1982!! Her smile, great subs, and especially the brownies keep the regulars coming back and certainly has moved me into becoming one of the regulars they know by name. The next time you are deciding where to eat lunch or who will create a sandwich platter for your next party, please support a local chain that has given more than their share back to OUR school.

Charles Wright ('86)

CLAIRE BROWN DAVIS ('66) CLASS AGENT EXTRAORDINAIRE!

About ten or twelve years ago, I got a computer and started emailing friends. Through computer networking, I "found" lots of folks and added them to my address book. Then in 2006 I became the co-chair for my 40th reunion and spent several hours every day looking for classmates, using whitepages.com and classmates.com. I called many of them, obtained their email addresses, and added them to my list. So when Susan asked me, I said, "Of course, I'll be a class agent!"



I send pertinent information to folks in my "Class of '66" file, things I read in

the newspaper or information people send me. I let folks know when a classmate has died, and I also share happy information that I receive. It has been great renewing old friendships and building stronger friendships with some I didn't know well during school. When asked to be the class agent, it seemed like an extension of what I was already doing..... keeping everybody 'in the loop'. When others have news to share, good or bad, they know they can send it to me and I'll inform the others. It's a job I really enjoy and it is appreciated. At last count, I have 107 "Class of '66" email addresses!

Claire Brown Davis ('66)

CLASS AGENTS

When we started this Association in 2006, we went about trying to find a class agent for each class. We were successful with some, not so with others. Also, our class agent job description was a little fuzzy, making it a bit difficult for anyone to successfully carry out the job – whatever it was!

Not too many folks are willing to undertake the task of locating contact info for their whole class. So this is an attempt to note what our class agents could do. After we hear from you, the Class Agent list on the web site will be revised. When your name is posted on the web site, your email address is not posted. Folks contact you through a link.

- A class agent should be a member and/or attend meetings of the Page A&F Association.
- There can be one or many.
- We would ask that you forward any information we send to you to any classmates with whom you are in contact.
- We would ask that you inform us of any pertinent info that we could/should share with other alumni.
- We would ask that you encourage membership in and support of our Association.

Let us know if you will be a class agent. As you can see, the job really doesn't require a lot, but for it to be a part of our framework, we would like to fill most of the spots!

If you have worked on a class reunion in the last few years, you may be like Claire Brown Davis ('66) who found being a class agent a natural progression after working on the reunion. She sets the bar high, but we are happy with help at any level!

Susan Tysinger sgtysinger@triad.rr.com



TWO CHALLENGES FOR THIS 2011-2012 YEAR...

1. Help us reach a membership mark of a thousand.
2. See which class can have the most memberships.

THE 2011 PAGE ALUMNI AND FRIENDS SCHOLARSHIP WINNERS, IN THEIR OWN WORDS, WHAT PAGE HAS MEANT TO ME

Rachel Goley

After attending a private Episcopal school for most of my elementary and middle education, Page High School was a change, to say the least. It was extremely overwhelming to be amid such a large and diverse population, after being surrounded by the same forty students for most of my life. While I loved the private school I attended, it could never teach me what I learned at Page.

I immersed myself in high school and took part in as many activities as I possibly could. I ran for an office on Student Council, I became a member of clubs, I wrote for the school paper, I began working with students in the ESL (English as a Second Language) program, and I attended every sporting event I could. It took no time at all for me to fall in love with the Page High community.

Upon entering Page High School, I had no idea what was in front of me. For four years, I was surrounded by one of the most diverse student bodies in Greensboro. I will leave Page knowing not only what I want to do, but also who I am. I have hopes of becoming an ESL teacher, but more importantly, I have taken everything I can from my high school experience.

Matthew Mills

Page is much more than a school. Page is an idea, a feeling of togetherness that I have come to identify with. I feel that at Page High School every student, past and present, has contributed in some way to the well-respected Page tradition and culture. In a world where conflicting ideas are often met with open hostility, the diverse landscape of Page High School makes it unique because so many can get along. Our Pirate Pride and love for the school unites us. The comfort level I feel within the hallways can be attributed to the excellent faculty and staff that make this school a joy to attend. Page High School is my home away from home and a place that I feel welcomed and judged, not by appearance but by actions.

Page has given me a sense of passion and pride that I wear on my sleeve and represent to the best of my ability. I bleed the school colors, worship the alma mater, and feel blessed to be a part of something bigger than myself. Whether playing on the soccer field, cheering at football games, or working hard in my classes, being a Pirate is a unique experience that I will always cherish. After I graduate, I know I will continue to be a loyal supporter and believer in Page High School.

Over my four years as a Pirate, I have grown and matured in a way that has truly prepared me for the real world. This school has given me a place to strive for excellence and facilitate my academic, athletic, and life goals. I have enjoyed every minute of my four years at Page High School, and I am thankful that I have been able to attend this school that has given me so much. I will be sad when high school ends, but I know that when I look back on my four years at Page High School, I will remember all of the great times I had as a Pirate. I think that the title of this essay should be "What Page Means to Me," instead of "What Page Has Meant to Me." I say this because my love for this school will not end after this year. I will forever hold Page and my high school memories deep within my heart.

Toby Ng

Page has allowed me to discover the meaning of friendships and taught me lessons that are truly unforgettable. It was a place that gave me the opportunity to be creative, an environment that permitted me to explore all the different fields and meet all sorts of people.

For four years, I was able to get involved in many different clubs and activities such as playmakers, student council, and orchestra. Through all these clubs and activities, I was able to get really involved with the school as well as with the community.

Giving back to my community was something I have gained as a valuable skill through the opportunities and experiences given to me while at Page High School.

Will George

With schoolwork, sports, and clubs like student council, it's safe to say there has never been a dull moment throughout my time at Page. I've discovered new-found passions, learned more about myself, and experienced four years full of memories that I will treasure for the rest of my life.

In my freshman year of high school, I discovered an interest in science that has only been strengthened during my experience at Page. I now am pursuing a pre-medical pathway in college, a choice I would have never made were it not for the engaging and excited nature of my teachers over the years in science, and other classes as well. The most lasting impression that Page will leave with me is a collection of memories and friends that I've acquired through the years. There is not a chance on earth that I will ever forget the rush of beating Grimsley my freshman year, or the first time in four years, then proceeding to whoop the Whirlies each year after that. It's memories such as these that I'll look fondly back on while thinking of Page. But apart from the memories, I will always take pride in the fact that no matter where I go in life, I will ALWAYS be a Pirate.

Grace D'Englere

As I look back on my years at Page, I reminisce on my involvement and love for the school. Being part of the Page family has had and will continue to have a huge impact on my life.

From participating in Young Life, Spanish Club, National Honor Society, and varsity soccer, every step of the way has influenced who I am today and my future ambitions. I had the honor of being a Page Pirate for the past four years, and I want to thank all the faculty, staff, coaches, and volunteers of the Page community for providing me with a successful and highly rewarding high school career. With our handprint mural on the wall, the class of 2011 will definitely leave "fingerprints" for generations to come for new Page Pirates.

Someday in the future I hope to walk the halls of Page and feel the same pride I hold in my heart today. As our Alma Mater claims, "Page High Forever."

This year's scholarship committee:

Stephanie Dingman Keaney, '93, Chair

Jennifer Hill, '93

Jeff Queen, '88

David White, III '76

Paul Wingate, '88



L. to R.: Matthew Mills, Grace D'Englere, Rachel Goley, Will George, Toby Ng

PAGE HIGH INTENSIVE ENGLISH LANGUAGE SCHOOL



Blamon Nimely (L) and Hiep NieKong (R)

In the spring of 2007, the concept of a "Language School" was introduced by teacher Teresa McNeill to Principal Marilyn Foley. With Mrs. Foley's support, the teachers who serve Page's refugee and immigrant population began employing methods that really work in educating these students.

With the help of the Page

Cares network, the school community continues to supply the needs of refugee families who are living below the poverty level.

For Blamon Nimely and Hiep NieKong, the 2011 Page High School graduation was a culminating event celebrating major success within our education system. Hiep arrived in Greensboro from Vietnam and enrolled in the eighth grade at Mendenhall Middle School in August of 2005, while Blamon came from Africa and enrolled in the ninth grade at Page in January of 2007.

High school is challenging enough, but for Blamon and Hiep the English language was the first barrier blocking their academic success. Neither of the young men spoke any English; neither of their native languages shares similarities in structure or alphabet with the English language. To compound Blamon's problems, he had been living in a refugee camp in Cote d'Ivoire where schooling was a low priority. When Blamon came to Page, he could not even grasp a pencil properly in order to practice copying the letters of the English alphabet. Imagine how laborious taking notes and completing homework assignments has been for him.

Graduation night for these two young men brought the ultimate in family pride. Both Blamon and Hiep achieved the

highest awards they ever thought possible: a diploma and a promise for a better life because of their successes at Page. They had struggled, but they had reached their goals, meeting state requirements for high school graduation. They completed the career and technical education work that made them eligible for programs of study at GTCC.

Rising above all expectations, Hiep was inducted into Page's chapter of the National Technical Honor Society in April. Not only did Hiep focus on advancing himself through the use of the English language and his self-imposed standards for reading and studying, he also reached out to other students arriving at Page from nations all around the world. He became a translator, an advocate, an academic coach, and a friend to them. He gave of himself and of his time to advance other students toward academic success.

The Page High Intensive English Language School staff and the young men's hard-working parents can share credit for the success of Blamon and Hiep. All of these folks communicated their high expectations and dedicated time and effort to keep the students focused on their target.

Besides Blamon and Hiep, there are numerous other success stories from graduates of Page and its Intensive English Language School. They leave Page equipped with the skills, determination, and stamina to lead productive lives. With Pirate Pride they all declare: *We share the Earth; it is our common home.*

Teresa McNeill

Editor's Note: Hiep's accomplishments and service to other students was so highly regarded by his classmates that he received a standing ovation from his fellow seniors at the Senior Awards Ceremony.

Teresa McNeill received the 2011 National Education Association and Horace Mann Award for Teaching Excellence.

CLASS OF '61 HOLDS FIRST PAGE 50TH REUNION

The Page Class of 1961 held its 50th Reunion June 9-12. This was the first class to attend all three years at Page and the first to hold a 50th Reunion. With more than 200 attendees, including spouses and friends from other classes – notably '59, '60, '62 – it was a smashing success!

The weekend began at the Downtown Marriott, Reunion Headquarters, where more than sixty people stayed for the weekend. A large "Welcome Class of '61 Page High School" banner was displayed in the lobby, and later at each venue that followed.

Golf and Baseball.....Twenty-six golfers participated in a Captain's Choice event Friday afternoon at GCC, and over eighty attended the Greensboro Grasshoppers game Friday evening. The party and reconnecting continued at the Marriott in the Hospitality Suite.

Tour of Page High.....On Saturday morning, over 120 attended a tour of Page High School. Principal Marilyn Foley greeted the crowd. She gave us a wonderful overview of the last fifty years at Page, including the outstanding achievements in academics and sports and the wonderful reputation Page has attained. We were proud to hear of the many traditions we established that continue and amused by remembering others that have been lost to changing times (smoking areas, Christmas caroling in the halls).



Golf

Secretary Karen Berg and Mrs. Foley led tours of the school, and the tour participants were a rowdy crowd, requiring Karen's mighty whistle to establish order many times with her group. (Mrs. Foley had asked for the well-behaved "students" to go in her group!) We were amazed to see our old lockers in the original parts of A and B wings are still in use, and we peered into classrooms rich with memories of teachers and classes both loved and dreaded! Fond memories were evoked in the band and choir rooms, as "They haven't changed at all" was heard from some. Touring the original art room, we were pleased to see the wonderful art on the cabinets and walls, unlike in our time when painting on them would have been strictly forbidden. We were so proud to stand in the gym and see all the championship banners hanging, as we had struggled for the most part athletically those first years with a small student body. A monumental exception to that will be shared later!



Tour of school

Lunch at Ham's.....The tour was followed by lunch with 120+ at Ham's on the Lake. It is not the Ham's we remembered, nor is Buffalo Lake, as it was hidden in the woods behind the school in our time. Classmates who had not been back to Greensboro in many years, some not since high school, were amazed at all the changes and growth. For



Sign up for the Page E-news at pagealumniandfriends.org.



deceased. After a moment of silence in their memories, all rose to reverently sing *Page High Forever*, accompanied by a vintage recording of the Alma Mater performed by the 1961 choir and orchestra and written by Milton Bliss, Page's first choral instructor.

Former faculty members Mary Lasher, Robert Newton, and Albert Lochra joined us. Ms. Lasher, still very full of energy, taught history. Mr. Newton coached and taught English in our day, but returned in 1967 to become Page's second principal. Mr. Lochra, a beloved history and D.E. teacher, was most remembered as the school store operator. He quipped, "The one thing I can honestly say to no one is 'You haven't changed a bit!'"

Madeleine Berry Nash, webmistress for the reunion, shared statistics about the 273 of us who were in the class. We now live in 18 states, the majority in North Carolina, followed by South Carolina and Florida. A large number of the North Carolinians are still in the greater Greensboro area. Present at the reunion were more than a dozen Page couples – Page people who married other Page people, including four couples that married their own 1961 classmates.



A first Pirates-over-Whirlies Victory, and the net comes down!!! The most rousing moment of the evening came when Mike Hendrix made his surprise presentation. Accompanied by eight of the surviving thirteen members of the 1961 basketball team, he presented the basketball net from the **first Pirate victory ever over the Whirlies** to Page Athletic Director Rusty Lee. After the exciting game in Page's gym on the evening of December 20, 1960, co-captain Bob Montgomery cut the last loop and tossed it to his friend Mike. Mike had saved it all these years, through many moves, and said it had hung above his workbench for years. The story was told, including the fact that we defeated the Whirlies again that season in their own gym! The crowd rose and cheered, and the fight song was sung with gusto, even though it was written after we graduated (we had it printed in our reunion memento booklet!). Mr. Lee was also presented a '61 team photo and the newspaper article of the momentous occasion.



Chuck Scott (L) and Mike Hendrix (R)

music (50's, 60's, and beach) for all to enjoy. The hardy among us gathered in the hospitality suite, talking until 2 am. We hope all classes behind us will have as much fun as we did!

Brenda Thomason Williams, Class of '61

The Main Event... began at 6:30 Saturday evening, just after a mighty thunder and hailstorm roared through, causing lights to blink at the hotel. Fortunately, there was no interruption of power, and we were generating plenty of energy on our own as over 200 folks socialized before the dinner. Senior year photos on our nametags made recognition of former classmates possible, which would have been futile otherwise!!

Class President Marc Harris delivered the invocation and VP Bob Douglas emceed. Secretary Camilla Moore Hendrix and treasurer Jeff Hollander read the names of the thirty-nine classmates who are known to be

CLASS REUNIONS

The Class of 1970 had a terrific reunion October 8-9, 2010. Friday evening before, during, and after the Page/Grimsley game, classmates and guests gathered informally at Grafitti's Bistro at North Elm Village. On Saturday evening, a catered buffet dinner was enjoyed by all at the Sherwood Swim & Racquet Club. There were 90+ class members and a total of 150 attendees. Actually, many of the spouses were Page alumni from other years.

The committee was made up of folks who have worked on our many past reunions:

Patty Plante Brown, Debbi Dean Moore, Julia Crater Stevens,

Mabel Livingston Winslow, Rich Winslow, Kathy Wolfe Morgan, Cynthia Driver Johnson, Greg Felts, Mike Kiser, Doug Copeland...and from his remote location, Robert Pittman.



The Class of 1980 had its 30th reunion celebration Oct. 8-9, 2010, an action-packed weekend of fun and tradition. Friday morning some alumni participated in the infamous Page/Grimsley "Rivalry Reunion" golf tournament played on both courses at Bryan Park. The following 1980 graduates played in the event (based on registry): Al Garvey, David Joseph, Charles Betts, John Albright, Richard Beard, Joe Bell, Joe DePasquale, Johnny Dinkins, Bobby Hitchcock, Wade Meadows, Mark Moseley, David Needle, Bryon Nelson, Matt Regan, Jimmy Reitinger, Mark Simpson, Gordon Thompson, and Alan Wright.

Friday night featured the Page/Grimsley football game, which resulted in a Page victory. The night was climaxed with an after-game Page/Grimsley class of 1980 joint reunion at the Elks Lodge, featuring food, beverage, and live music. This event could have been categorized as a Friday night OR a Saturday morning event, as a good time was had by all!

Saturday night was our formal event held at the downtown Sheraton. The night was



kicked off with an emotional and inspirational talk from classmate Lee Rouson (former NFL Giant

standout) who brought everyone together in mind and spirit for a memorable evening. Much work went into the

evening with decorations, plenty of food, photography, and great music. The name badges were the hit of the night because our senior pictures were affixed to them. I think we all had some surprised looks.

The Class of 1980 raised over \$3,000 from the weekend to be used towards a worthwhile Page project.

REUNIONS

The Class of 1966 will celebrate its 45th Reunion August 12-13. Friday night will be a gathering at Ham's Lakeside, 6-8 PM, and Saturday night will be at Thirsty's 6:30-11:30 PM. Cost for both is \$55. For more details, email Claire Brown Davis at shorty@triad.rr.com or Kay Maddox at kmaddox@sc.rr.com.

The Class of 1971 will be celebrating its 40th Reunion September 30-October 2. The main reunion event is Saturday night at the Sherwood Swim and Racquet Club across from Page. All the up-to-date news and details can be found at 1971.pagealumniandfriends.org. Contact the Reunion committee members via email at 71Reunion@pagealumniandfriends.org.

The Class of 1981 will celebrate its 30th Reunion September 30-October 1. Friday night events include the 7:00 PM Page/Grimsley game followed by a 9:00 PM cash-bar social at Café Pasta on State Street. Saturday evening at 6:00 PM, alumni and guests will gather at the Downtown Marriott for heavy hors d'oeuvres, a cash bar, a DJ, special guests, a slide show, and a sharing of memories. Go to www.phs81reunion.com.

The Class of 1986 will celebrate its 25th Reunion September 30-October 1. Classmates will sit together at the Friday night Page-Grimsley game, enjoy a Saturday family picnic at Country Park, and enjoy a dinner-dance at George K's Saturday night. Some will also join in the Page-Grimsley Golf Tournament that Saturday. Visit the web site at www.pagehs86.com for reunion details and reservation information. Go to www.pagegrimsleygolf.com to sign up for golf.

The Class of 1991 will celebrate its 20th Reunion September 30-October 1. Classmates will sit together at the Friday night Page-Grimsley game, then gather for a 9-11 social at Printworks Bistro. The main event will be Saturday night at Café Pasta with a pre-paid pasta dinner and a cash bar. Tickets are purchased on the reunion web site through paypal, and no tickets may be purchased at the door. Please send Julie Heard Newcomb photos for the Saturday night slideshow at julie.newcomb@capital.org. To offer help or suggestions, contact Brandon at bfrick1@triad.rr.com.

The Class of 2001 is having its 10th Reunion September 30 and October 1. Plans include the Friday night Page-Grimsley football game, a gathering afterwards, and a Saturday night function. Please contact whitney.mcvey@gmail.com for more details.

PAGE HIGH SCHOOL ATHLETIC FACILITIES (\$2,074,081) UPDATE

If you have been by the Page High School campus lately, you can't help but notice all the heavy machinery working on the northeast end of campus. Work is in full swing as another phase of upgrading the Page athletic facilities has begun. This upgrade is another step of what was envisioned in the Page High School Athletic Facilities Master Plan which was developed five years ago.

On the Kirby Stadium home side, construction workers have finished with demolition of the existing bathrooms, sidewalks, and front entrance area. And, yes...the Love Shack (Booster Club storage building). Dirt has been excavated (including digging of the footings) for the new building that will include locker rooms, restrooms, and a concession stand. Also the footings have been dug for the "Wall of Champions" that will be erected behind the aluminum bleachers on the home side of Kirby Stadium.

On the visitor side of Kirby Stadium, the retention pond has been created. (It is so big I think we might need to add "Bass Fishing" as a sport!) The footings and metal reinforcing bars are in place for the visitor entrance and the decorative fence that will lead to the connector bridge (between the Cone Fields and the visitor concession stand).

At the Cone Fields, both concrete bleacher pads have been poured and are ready. The underground trenching for the electrical wiring, which will supply the additional lights and new scoreboards, is under way. Starting Monday, July 18, the asbestos abatement process will begin, readying the way for the new Auxiliary Gym floor to be installed shortly thereafter.

The project is on time and expected to be completed by mid-October. We will still be hosting all athletic games in the Kirby Stadium to start the season. It is still too early to know exactly how we will be entering the stadium on the home side, but contingency plans are in place. Those plans will be adjusted (and advertised to our fans) once we see how far construction has advanced. We know that temporary toilets will be in use on the home side for at least the beginning of the season. Currently all fields and the track are closed to public use.

Visit the Page web site for photos of the construction process. Sign up for the Page Alumni and Friends E-newsletter that will keep you updated. We'll all watch with excitement (and patience) as one more dream becomes a reality at Page!

*Brett Schulman, President
Page Athletic Booster Club*



PAGE PTSA WINS THREE MAJOR AWARDS

This spring Page was awarded three major awards at the annual PTA Awards Banquet: Principal of the Year, Service to Students, and Honor Unit Award.

The Principal of the Year went to Ms. Marilyn Foley. Page is fortunate to have a leader who believes that academics, good character, self-discipline, sports, the arts, and so much more are ALL important parts of what makes a school great. Under her leadership, Page and her students have thrived. The following is part of the nomination narrative:

She may be short, but her genuine concern for our school and its 1859 students makes her stand ten feet tall. Our population is racially and socio-economically diverse, including a significant number of refugee and ESOL students. Ms. Foley has commented that in one day's time she may be helping one student apply to Harvard and helping another student find housing. Marilyn Foley's compassion, tireless dedication, and quiet moral authority combine to make her a formidable nominee.

The Service to Students Award is given to the school that has provided a most unique or valuable service to its students. Page Cares, initiated by parent Karen Roer, is a PTSA initiative that was founded to help students (many homeless) and families in need of food or clothing. Since December, \$8,500 has been received from Page parents, community members, the PTSA, and the Page Alumni and Friends Association. The staff and the school social worker have been key in identifying students' needs.

The Honor Unit Award is given to any school that earns 200 points or more from a provided checklist. Some of these items include payment of PTSA membership dues, attendance at various county or state PTA functions, recognition of students, recognition of teachers, recognition of volunteers, beautification projects, and "Reflections" contest entries.

A&F MEMBERS FOR THE PAST YEAR - JULY 1, 2010-JUNE 30, 2011

Name	Name at Grad.	Year	Giving level	Name	Name at Grad.	Year	Giving level
Eddie C.	Mitchell	1959	Anchor	Ellen & Robert*	Worth	1968	Anchor
Valerie	Fennell	1960	Basic	Louise	Britt	1969	Basic
Bill	Bookout	1961	Anchor	Susan	Clark	1969	Anchor
Joe III	Brantley	1961	Anchor	Marcia	Hamilton	1969	Anchor
Donald B.	Brooks	1961	Anchor	Connie	Hicks	1969	Pirate Club
Kathy	Dallas	1961	Basic	Susan	Moorehead	1969	Pirate Club
Patricia	Dalton	1961	Basic	Tom "Tee"	Hall	1970	Pirate Club
Jeff	Hollander	1961	Pirate Club	Frank	McNutt	1970	Basic
Madeleine	Nash	1961	Basic	Billy	Mitchell	1970	Pirate Club
Craig	Navey	1961	Anchor	Robert	Pittman	1970	Pirate Club
Don	Orr	1961	Anchor	Richard	Rawls	1970	Anchor
Sue	Rabon	1961	Basic	Ellen & Patrick*	Weiner	1970	Pirate Club
Chuck	Scott	1961	Pirate Club	Mabel* & Rich*	Winslow	1970	Anchor
Linda	Southard	1961	Pirate Club	Susie	Cecil	1971	Anchor
Brenda	Wilson	1961	Basic	Brad	Earle	1971	Basic
Bill	Bedford	1962	Basic	Joyce	Kent	1971	Basic
Pam	Bookout	1962	Anchor	Diana	Michel	1971	Pirate Club
Jud	Franklin	1962	Basic	Dennis (Buddy)	Rankin	1971	Basic
Lane	Harris	1962	Pirate Club	Chris	Shields	1971	Basic
Carole & Buck*	Pearce	1962	Pirate Club	Thomas F.	Cochran	1972	Pirate Club
Carole	Stone	1962	Basic	Charlie	Gossage	1972	Anchor
Pamela	Bunton	1963	Anchor	Mark Douglas	Green	1972	Anchor
Becky & Jim*	Compton	1963	Anchor	Mike	Leonard	1972	Pirate Club
Wilson O.	Elkins	1963	Anchor	Charles A.	Liles	1972	Pirate Club
Carol	Franklin	1963	Basic	Elisabeth	Murray	1972	Anchor
Barbara A.	Kazazes	1963	Anchor	Theresa	Schackelford	1972	Pirate Club
Carole & Steve*	Loflin	1963	Anchor	Martha	Leath	1973	Pirate Club
Page	Parker	1963	Basic	Emmett E.	McLean	1973	Anchor
Jim	Sanders	1963	Anchor	Garson	Rice	1973	Anchor
Jane	Scott	1963	Pirate Club	Donald	Moore	1974	Anchor
Doug	Stack	1963	Anchor	Susan* & Paul	Topolka	1974	Pirate Club
Mary Rose	Taylor	1963	Anchor	William "Richard"	White	1974	Anchor
Sally	Wilson	1963	Pirate Club	Darylene	Hecht	1975	Anchor
Jo Ellen	Barley	1964	Anchor	Susie	Pierce	1975	Pirate Club
Elizabeth (Bettie)	Brunner	1964	Basic	Olivia Renee	Willis	1975	Basic
John V.	Clapp	1964	Pirate Club	Ben	Goslen	1976	Anchor
John William	Currie	1964	Basic	Danette	Rutherford	1976	Pirate Club
Barbara	Curtis	1964	Anchor	David C. III	White	1976	Pirate Club
Sandra K.	Jones	1964	Pirate Club	Anne & Jimmy*	Chamblee	1977	Anchor
Winburne	King	1964	Anchor	Dana Rees	Folley	1977	Anchor
Melinda* & Jim	Ogburn	1964	Pirate Club	Cathy* & Bob	Lovejoy	1977	Pirate Club
Judy	Peede	1964	Pirate Club	Wright	Archer	1978	Buccaneer
Tom	Tyson	1964	Anchor	Kathleen & Dean*	Little	1978	Anchor
Diane	Aycock	1965	Basic	David A.	Robinson	1978	Anchor
David	Clark	1965	Anchor	John	Rountree	1978	Anchor
Paul H.	Daimler	1965	Pirate Club	Stanley Brad	Swisher	1978	Anchor
Paul H.	Daimler	1965	Anchor	Whitney	Baird	1979	Basic
Stephen	Forrest	1965	Anchor	Jeanne	Blaisdell	1979	Pirate Club
Rick	Fuller	1965	Anchor	Katharine	Campbell	1979	Pirate Club
Joan	King	1965	Anchor	Jim	Kabrich	1979	Anchor
Jayne R.	McDonald	1965	Basic	Ellen	Nesbit	1979	Basic
Clem	Medley	1965	Anchor	Claire	Shields	1979	Basic
Anita	Zeigler	1965	Basic	Garvey	Al	1980	Pirate Club
Wheeler	Anderson	1966	Anchor	Karen	Archer	1980	Buccaneer
Myra	Atkins	1966	Pirate Club	Charles	Betts	1980	Anchor
Sandi	Banner	1966	Pirate Club	Andrew	Grolnick	1980	Anchor
Angela	Berry	1966	Pirate Club	Keith	Hudson	1980	Pirate Club
Claire	Davis	1966	Anchor	Harriette & Bob*	Knox	1980	Basic
Jo Marie	Fuller	1966	Anchor	Revardale* & Charles*	Middleton	1980	Pirate Club
Carolyn	Green	1966	Pirate Club	Garvey	Carole	1981	Pirate Club
Emily	Gross	1966	Basic	Cathy & Michael*	Flannery	1981	Basic
Pam* & Stephen	Hassenfelt	1966	Anchor	Leesa	Clardy	1982	Pirate Club
Bill	Keen	1966	Pirate Club	Charles D.	Piper	1982	Pirate Club
Rad	Kivette	1966	Basic	Edward J.	Dancausse	1983	Basic
Bettie* & Rick	Lambeth	1966	Anchor	Jenny	Dilworth	1983	Pirate Club
Ann* & Gary*	Murphy	1966	Anchor	David	Greene	1983	Pirate Club
Rick	Remmey	1966	Anchor	Jean & Frank*	Hall	1983	Pirate Club
Cliff	Schmidt	1966	Pirate Club	Walker	Poole	1983	Anchor
Tennie	Skladnowski	1966	Pirate Club	Jeanette	Billings	1984	Basic
Charlie	Vance	1966	Pirate Club	Lisa	Boxley	1984	Pirate Club
Charlie	Vance	1966	Pirate Club	Tammy	Dixon	1984	Pirate Club
Vickie	Wooten	1966	Pirate Club	Adair	Ellis	1984	Pirate Club
Doug	Berry	1967	Pirate Club	Timothy D.	Roberts	1984	Anchor
Judy S.	Calland	1967	Anchor	Todd	Robinson	1984	Basic
Pat	Harris	1967	Basic	Merikay	Hunt	1984	Anchor
John H.	King	1967	Pirate Club	Debbie	West	1984	Basic
Patricia (Trish)	Litchfield	1967	Pirate Club	Harold	Billings	1985	Basic
Carol* & Jim	Long	1967	Anchor	Clive	Boxley	1985	Pirate Club
Gary	Moore	1967	Pirate Club	Scott	Rhodes	1985	Basic
Sarah Jo	Safrit	1967	Anchor	Ashley	Simpson	1985	Pirate Club
John	Stanley	1967	Basic	Wendy & Charles*	Wright	1986	Anchor
Sandra	Dilger	1968	Pirate Club	Nathan	Duggins	1987	Anchor
David	Dunker	1968	Anchor	Chris	Denby	1989	Pirate Club
Sharon	Morgan	1968	Anchor	Laura	Gardner	1989	Pirate Club
Richard	Neal	1968	Anchor	Terry L.	Hutchens	1989	Basic
Kathryn	Roberson	1968	Basic	Sam	Bullard	1990	Pirate Treasure
Rachel	Strauss	1968	Basic	Brandon	Frick	1991	Anchor

A&F MEMBERS CONT'D.

Name		Name at Grad.	Year	Giving level
Rebecca	Hancock	Brantley	1991	Pirate Club
Marty* & Brian	Sumner	Long	1992	Anchor
Stephanie* & Stephen	Keaney	Dingman	1993	Pirate Club
Tarah D.	Mayes	Mayes	1993	Pirate Club
Kelly	Rogers	Smith	1993	Pirate Club
Leigh	Abraham	Tysinger	1995	Pirate Club
Margaret* & James	Chase	McNairy	1995	Basic
Claire* & Brian*	Cooke	Long	1995	Pirate Club
Mary Lindsay	Evans	Weatherly	1995	Pirate Club
John	Benson	Benson	1996	Pirate Club
Matt	Cobb	Cobb	1996	Basic
Deanna "Michelle"	Wright	Wright	1996	Pirate Club
Caroline	Anderson	Anderson	1997	Basic
Rachel	Cobb	Barger	1997	Basic
Leigh	Wheeler	Brantley	1997	Anchor
Shannon	Norman	Bailey	1999	Pirate Club
Hunter* & Jesse*	Arnett	Austin	2002	Basic

2010-2011 PAGE FRIENDS**Pirate Treasure (\$1,000-2,499)**

Alan & Pam	Duncan
Sally & Chris	Newman
Susan & Bill	Veazey

Buccaneer (\$499-999)

Donna & Andy	Lee
Carolyn & Clyde	Ratcliffe
Susan & Larry	Tysinger
Sue & Fred	Yates

Anchor (\$100-499)

Kent	Auberry
Alexa & Bill	Aycock
Peggy & Jim	Bagwell
Laurence W.	Bassett
Nan & John	Bayersdorfer
Kristi & Pete	Beeler
Jackie & Steve	Bell
Ken	Benson
Kris & David	Cooke
Clara & Jim	Duggins
Elizabeth & Edgar	Fisher
Beverly & Mark	Harrah
Debbie	Hayes
Lisa & Rodney	Hazel
Sharon & Jack	Hicks
Virginia & Ken	Karb
Liz & Joel	Mills
Mac	Morris
Kate & Sam	Morrow
Bettie & Steve	Olson
Flora & Tommy	Price
Donna & Donald	Pulitzer
L. Richard	Rawls
Karen & Charlie	Roer
Sylvia & Richard	Vanore
Judy	Walker
Jeri & Peter	Whitfield
Sharon & Tad	Wilson
Lynn & Art	Winstead
Terry W.	Worrell
Agnes & Walter	Wright

Pirate Club (\$26-99)

Chris & John	Beaman
Rebecca & Chuck	Buffington
Lisa & Dean	Chislett
Coach Winston	Cloer
Audra & Dennis	Dougherty
Jennifer & Frank	Flaherty
Rachel & Joe	Frick
Nancy & Erwin	Fuller
Paula & John	Hodges
Martha & Eric	Hoekstra
Maxine & Dave	Johnson
Olive & Will	Jordan
Robin & Tim	Lane
Kathy	Lester
Bonnie & Dan	McAlister
Beverly & John	McCracken
Teresa	McNeil
Wendy & Kenneth	Myers
Carl	Oehmig
Carter & Ashley	Overton
Debbie & Ken	Payne
David & Wendy	Rapp
Wendy & David	Rapp
Brenda & Jim	Wilson
Laura & Roger	Wood

Basic (\$25)

Carole & Jose	Biggers
Sue & Ben	Coston
Joan & John	Dilworth
Barry E.	Dooley
Ann & Sam	Doyle
Jenny & Bob	Forman
Kim & Worth	Holleman
Maura	McGinn
Margaret	Montana
James "Jay"	Robinson
Elizabeth	Shull
Celie & Frank	Starling
Sandy & David	Thompson
Sara & Bubba	Tollison
Rebecca	Wilkerson
Harry	Young

Support your Page Alumni and Friends Association by adding your name to this short list below. Send in your membership donation TODAY for the July 2011-June 30, 2012 year.

2011-2012 PAGE ALUMNI AND FRIENDS

Name		Name at Grad.	Year	Giving level
Sue	Rabon	Terrell	1961	Pirate Club
Charles "Chuck"	Crews	Crews	1964	Pirate Club
Linda	Haigh	Boswell	1966	Pirate Club
Vickie	Wooten	Von Cannon	1966	Pirate Club
Beth	Bramhall	Godwin	1967	Basic
Dean	Little	Little	1978	Pirate Club
Al	Garvey	Garvey	1980	Anchor
Carole	Garvey	Long	1981	Anchor
Michael	Bateman	Bateman	1983	Anchor
Matthew	Mills	Mills	2011	Basic
Julie	Longmire			Basic
Liz & Joel	Mills			Anchor
Nancy & Robert	Thurston			Anchor
Sharon & Tad	Wilson			Anchor

PAGE MEMORIAL GARDEN

The untimely deaths of three Page students – Sarah Wray ('10) last year, and Trevor Todd ('10) and Brooks Ferrell ('11) this year – have had an enormous impact on the Page student body. In an effort to honor the memory of these and other Page students who have died, several of Jason Allen's IB Spanish students came up with a plan for a Memorial Garden with plantings, a fountain, and a pathway. With no formal method of collecting information about past students who have died, they will include any names they are given for plaques that will be placed around the fountain.

Rising senior Angus Ray has led this effort and was joined by committee members Mori Greene, Din H, and Nick Smith. They led a fund-raising effort at Page, receiving money from Page students, faculty, and parents. The Page Alumni and Friends Association is matching their funds 2:1 so they can complete the project. Currently, you can find many Page students digging, planting, and hauling in the area. They plan to dedicate the Memorial Garden in October.

This Memorial Garden is in the totally enclosed large quadrant behind the Media Center, a space accessed by downstairs' doorways. It has gradually evolved from being a blank dirt space left by major construction to a lovely grassy, treed, planted area. This Memorial Garden is a great addition to this space...and a reminder of the compassion and work ethic of so many Page students.



PAGE HIGH SCHOOL PRESENTS "42ND STREET"

This year's spring spectacular at Page was **42nd Street**, a Broadway musical set during the Great Depression. The story centers on a young Broadway dreamer's rise to stardom and the bumps that she and the hilarious cast encounter along the way. Heading up the cast were Bonnie Flannery, Dan Galyon, John Reardon, Emily Bowden, Kaitlyn Godfrey, and Pete Hanner. Fifty students had acting parts, while twenty others filled out the crew and orchestra.

While all musicals are quite challenging, the Playmakers pushed past many obstacles to put on the production. For starters, the entire show was moved up a month due to the late spring break. Factor in Winter Break and the crazy winter weather in January, just finding time to practice was quite a challenge for the Playmakers. Not to mention that this year's musical featured a great amount of tap dancing, which almost none of the actors had ever done!

Wonderful choreographer John Phillips, a teacher at Brooks Global, was there every step of the way to teach and encourage the dancers. Only *three* of the fifty actors tap dancing in the musical had ever had any tap dance experience! Students rehearsed four-six days a week, including Saturday mornings. Seeing the Page High School stage filled with tap dancing students was quite a thrill!



Students designed, built, painted the sets, and worked on the costuming. This year presented a unique challenge for the theater club. This was the first year for most of the students without their beloved director Michael Parrish. Mr. Parrish retired last year after many years of service to his art. When asked about the production and Mrs. White, the new director, he said, "I was extremely impressed and had a ball attending opening night of **42nd Street**. Mrs. White is an excellent teacher and has done a great job continuing the success of the students who are the Page Playmakers. I know I left the Playmakers in wonderful hands. I could not be more proud of her."

When asked to reflect on her first year as the drama director, Mrs. White said, "It was great to be at a school where the theater department is supported and so appreciated, and it has been a great first year. It's been a lot to get accustomed to for both the students and me. One major thing I learned was to be able to take a step back and let the students take control and run things. My favorite memories of this year were all of the laughs we had as Playmakers. So many unplanned funny things happened that helped to keep things in perspective. I am so proud of all of the students of **42nd Street**. They worked so hard to put on the show and it showed in their performance!"

All in all, the cast agreed that scheduling difficulties, blisters, and long hours were well worth it to make the show amazing. And amazing it was!

Haley Waxman, Features Editor of Pages by Page

FRIENDS OF THE PAGE AUDITORIUM

Friends of the Page Auditorium are very excited to report that the Auditorium Renovation Plan is now in the beginning stages. Several members of the committee met with a Professional Theatre Consultant, who has many years of experience with high school theatre and auditorium renovation projects. We are very excited about his ideas and the possibilities that lie ahead. We hope to move forward with the consultant and his team very quickly, which in turn will give us a full Conceptual Design Plan.

The plan itself is a large expense, but it will be our blueprint for a first class community theater. Any donations for start-up expenses of this project can be made through the Page Alumni and Friends Association. Additional committee members are always welcome!

Val Koone, Friends of the Page Auditorium Chair
vkoone@triad.rr.com

We gladly accept gifts of stock or matching funds!

This fiscal year is July 1, 2011 through June 30, 2012

2011-2012 PAGE ALUMNI AND FRIENDS ASSOCIATION Membership Form

www.pagealumniandfriends.org

Name(s) _____

Maiden name (if applicable) _____

Graduate () I'd like to help on a committee. () I would like to be a class agent. ()

Parent () I'd like to be on the Board. () Add me to the email /"help" list ()

Friend ()

Year(s) you or your child(ren) graduated (or will graduate) _____

Address _____ City _____ State _____ Zip _____

Phone #() _____ E-mail (print) _____

MEMBERSHIP

_____ \$25 Basic
 _____ \$26-99 Pirate Club
 _____ \$100-499 Anchor
 _____ \$500-999 Buccaneer
 _____ \$1,000-2,499 Pirate Treasure
 _____ \$2,500-4,999 Swashbuckler
 _____ \$5,000+ Captain's Table

PAGE ALUMNI T-SHIRT(S)

_____ S _____ M _____ L _____ XL
 \$13 per shirt = \$ _____

_____ XXL _____ XXXL
 \$16 per shirt = \$ _____

Membership donation \$ _____

_____ Use my membership \$ for the complex only.
 _____ Use my membership \$ for scholarships only.
 _____ Use my membership \$ for Alma Pinnix Bank.
 _____ Use my membership \$ for Page Cares.
 _____ Use my membership \$ for the Auditorium.
 _____ Use my membership \$ as needed.
 _____ Split my membership \$ as designated.
 _____ Please remove me from the distribution list.

Total \$ _____

_____ My donation is in (honor/memory of – circle one) _____

All members' names will be listed in the newsletter. Below, please write any updates, comments, or alumni information you'd like included in our next newsletter. ***YOUR GENEROSITY IS GREATLY APPRECIATED!!!***

Mail to: **Page Alumni and Friends Association**, PO Box 39616, Greensboro, NC 27438. ***All membership donations are TAX-DEDUCTIBLE.***

The Page Alumni and Friends Association is a non-profit corporation which has been determined to be a tax-exempt organization pursuant to Section 501(c)3 of the Internal Revenue code. The entire amount of the contributions may be deducted as a charitable contribution under the federal income tax laws, subject to limitations contained therein. Consult your tax advisor for information as to the application of these laws to your particular situation.

IN MEMORY OF**Brenda Poole Wilson ('61)** in memory of **Margaret Garrett****Charles F. Crews, III "Chuck" ('64)** in memory of **Jim "Squirrel" Garrison ('63)****Dan and Katherine Holland Campbell ('79)** in memory of **Roger Lane ('78)**, our wonderful friend and favorite bass guitarist!**Paul H. Daimler ('65)** in memory of **Karl Ljung ('66)** and **Jimmy Henson ('66)****Stephen Forrest ('65)** in memory of **Dave Garvin ('65)****William "Richard" White ('74)** in memory of **Bill White****Susan Wheeler ('75) and Paul Topolka** in memory of **Nanny Andrews and Kevin Lacklen****Michael C. Bateman ('83)** in memory of **Grady Hooker ('83)****Merikay Hunt Tillman ('84)** in memory of **Dr. and Mrs. Glen Hunt****Elizabeth and Edgar Fisher** in memory of **Beth and Nancy Bean****Mac Morris** in memory of **Marilynn and Walter King****Carter and Ashley Overton** in memory of Carter's brother, **Mark Johnson ('69)****DEATHS****Roy Mitchell**, husband of **Lynnie Hicks Mitchell ('66)**, died February 3, 2011.**Courtney Middleton ('67)** died May 22, 2011.**Pam Turner ('71)** died May 19, 2009.**Phil Barber ('78)** died December 29, 2010.**William Brian Gordon ('78)** died July 13, 2011.**Kathleen Jeffries ('78)** died January 2011.**James Jeffries ('82)** died December 5, 2010.**Trevor Anthony "T.J." Todd ('10)** died April 23, 2011.**Catherine Harrison Page**, former Page history teacher for eighteen years, spanning the '60s, '70s, and '80s, died June 19, 2011.

Page Alumni and Friends Association
Page High School
PO Box 39616
Greensboro, NC 27438

Non-Profit Org.
US Postage
PAID
Permit No. 411
Greensboro, NC

The **PAGE**
Newsletter of the
Page Alumni and Friends
Association

Editor
Publisher

Susan Tysinger
Cathy Ingram

Newsletter of the Page Alumni and Friends Association

Then.....

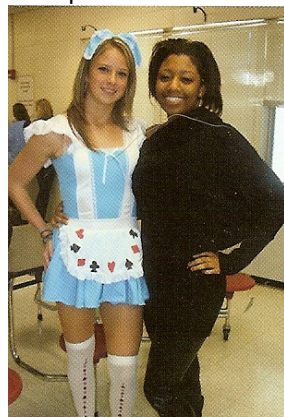
Now....

Spirit Week 1961



*Some things
never change*

Spirit Week 2011



*and
some
do*

